

PATTERNS

Porcelain Tile

22,3x22,3 cm
8.8x8.8"

sand
pink

PATTERNS unites a handcrafted appearance with geometrics and colour. Its harmonious mix of colours and geometric motifs lend it personality and decorative charm.

Linear brushstrokes of colour on a cement background add a distinctive, colourful, handcrafted touch within a general design conspicuous for its ordered regularity. PATTERNS comes in two easily combinable colour spectrums in a 22.3x22.3 format.

La geometría, el color y la artesanía, se dan cita en la colección PATTERNS. Una mezcla armónica de colores, así como el recurso de las geometrías, otorgan a la colección una apariencia decorativa y personal.

Sobre un fondo de apariencia cementosa, apreciamos los trazos pincelados de las líneas que aportan color y un toque artesanal y diferenciador dentro de un conjunto regular y ordenado. Destacan dos gamas cromáticas de fácil combinabilidad presentadas en formato 22,3x22,3.

● PATTERNS PINK GEOMETRIC / 22,3





● RABAT SAND/6X24,6

● PATTERNS SAND SQUARE/22,3

● PATTERNS SAND GEOMETRIC/22,3 · EYOQUE TAUPE SP/90X90/C/R

● PATTERNS SAND GEOMETRIC/22,3





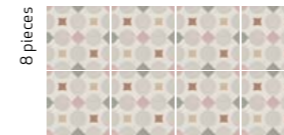
● PATTERNS PINK DIAMOND/22.3

PATTERNS

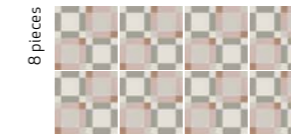
porcelain tile — 22,3x22,3



34803 PATTERNS PINK GEOMETRIC/22,3 Q6 (22,3x22,3 cm — 8^{3/4}x8^{3/4}*)
5 patterns
* III Mapei



34804 PATTERNS PINK SQUARE/22,3 Q6 (22,3x22,3 cm — 8^{3/4}x8^{3/4}*)
5 patterns
* III Mapei



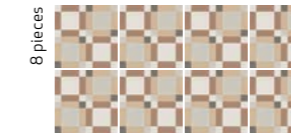
34805 PATTERNS PINK DIAMOND/22,3 Q6 (22,3x22,3 cm — 8^{3/4}x8^{3/4}*)
5 patterns
* III Mapei



34806 PATTERNS SAND GEOMETRIC/22,3 Q6 (22,3x22,3 cm — 8^{3/4}x8^{3/4}*)
5 patterns
* III Mapei



34807 PATTERNS SAND SQUARE/22,3 Q6 (22,3x22,3 cm — 8^{3/4}x8^{3/4}*)
5 patterns
* III Mapei



34808 PATTERNS SAND DIAMOND/22,3 Q6 (22,3x22,3 cm — 8^{3/4}x8^{3/4}*)
5 patterns
* III Mapei



Recommended joint color:
Color de junta recomendado:

* MAPEI | ULTRACOLOR PLUS
** KERAKOLL | FUGABELLA

TECHNICAL CHARACTERISTICS

MATT	GLOSS	SHADE VARIATION	SHOWER WALL	SHOWER FLOOR	FLOOR TRAFFIC	ANTISLIP
•	•	•	•	•	•	•
						DIN 51130
						UNE-EN 12633
						BS 7996-2
						ANSI A137.1
						R10 C2 +36WET >0,42

PACKING

UNIT	m ²	PIECES m ²	PIECES sq ft	PIECES BOX	m ² BOX	sq ft BOX	WEIGHT BOX (kg)	WEIGHT BOX (lb)	BOXES PALLET	m ² PALLET	sq ft PALLET	cm PALLET	THICKNESS (mm)	THICKNESS (inch)
PATTERNS	•	20	1.87	20	0.99	10.71	23.5	51.7	60	59.4	639.38	120x80x105	10	0.39