

Riv./Wall  
GARFAGNANA SILLANO 6x25 . 2<sup>1</sup>/<sub>2</sub>"x10"

Pav. Flor  
GARFAGNANA VAGLI 25x50 . 10"x20"

# GARFAGNANA

gres fine porcellanato smaltato .  
fine glazed porcelain stoneware

**formati . sizes:**  
25x50 . 10"x20"  
25x25 . 10"x10"  
12,5x25 . 5"x10"  
6x25 . 2<sup>1</sup>/<sub>2</sub>"x10"

**colori . colours:**  
Sillano  
Vagli  
Castiglione  
Serchio



GARFAGNANA

Riv./Wall - Pav./Floor  
COLORS SILLANO 6x25 . 2<sup>1</sup>/<sub>2</sub>"x10"



# GARFAGNANA

Pav./Floor  
GARFAGNANA SERCHIO 25x50 . 10"x20" - 25x25 . 10"x10"



# GARFAGNANA

gres fine porcellanato smaltato . fine glazed porcelain stoneware

formati . sizes:  
25x50 . 10"x20" - 25x25 . 10"x10" - 12,5x25 . 5"x10" - 6x25 . 2 1/2"x10"



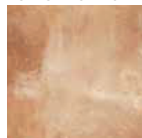
## Sillano

25x50 . 10"x20"



2550KSILL  
■ M19

25x25 . 10"x10"



2525KSILL  
■ M19

12,5x25 . 5"x10"



1225KSILL  
■ M19

6x25 . 2 1/2"x10"



625KSILL  
■ M42

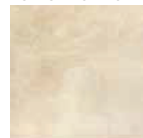
## Vagli

25x50 . 10"x20"



2550KVAGL  
■ M19

25x25 . 10"x10"



2525KVAGL  
■ M19

12,5x25 . 5"x10"



1225KVAGL  
■ M19

6x25 . 2 1/2"x10"



625KVAGL  
■ M42

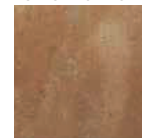
## Castiglione

25x50 . 10"x20"



2550KCAST  
■ M19

25x25 . 10"x10"



2525KCAST  
■ M19

12,5x25 . 5"x10"



1225KCAST  
■ M19

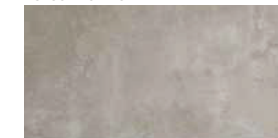
6x25 . 2 1/2"x10"



625KCAST  
■ M42

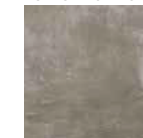
## Serchio

25x50 . 10"x20"



2550KSERC  
■ M19

25x25 . 10"x10"



2525KSERC  
■ M19

12,5x25 . 5"x10"



1225KSERC  
■ M19

6x25 . 2 1/2"x10"



625KSERC  
■ M42

### pezzi speciali . special pieces

	Elemento "L" 30x15x4 Antislip ▲ P10
Sillano	3015ELSILL
Vagli	3015ELVAGL
Castiglione	3015ELCAST
Serchio	3015ELSERC

### imballi e pesi . packing and weight

Formato (cm) Size (inches)	Spessore / Thickness mm	Pcs / Box	M <sup>2</sup> / Box	Kg / Box	Box / Pallet	M <sup>2</sup> / Pallet	Kg / Pallet
25x50 cm . 10"x20"	9	10	1,25	24,20	36	45,00	892
25x25 cm . 10"x10"	9	20	1,25	24,20	54	67,50	1322
12,5x25 cm . 5"x10"	9	26	0,81	15,90	81	65,61	1.287,9
6x25 cm . 2 1/2"x24"	9	34	0,51	10,20	99	50,49	1.029
Elemento "L" 30x15x4	9	6	-	6,00	-	-	-