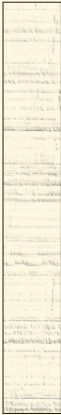
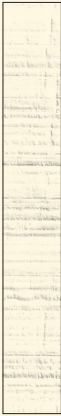
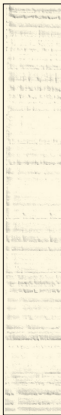


RIGO

THE CONTEMPORARY CHARM OF WOOD'S IMPERFECTIONS.



RIGO WHITE
5X35,5
2"X14"





RIGO GREY
5X35,5
2"X14"

RIGO GREY
5X35,5
2"X14"

NOTES

NOTES



HOLDER M-167-CA-X

CRYPTOGRAPHIC ABC'S

ARTICLE VI - The Hillist Substitution Cipher

Another of the Periodic ciphers - though not belonging to the Vigenere Family - is the Hillist Substitution, which employs numbers to represent letters. The numbers are derived from a 26 square, known as the Polybius Square, an explanation is forthcoming. In order to account for the extra alphabet of 26 letters in a block of but 26 cells, U-1 occupy general positions, but occasionally it is found that U-1 would be, with digits assigned across the top and down the left side:

1 2 3 4 5
L A B C D E
S F O R I K
3 L H O P
4 Q U T Z
5 W X Y Z

When the term "keyword" sequence has been described in some manner, the convenient way of doing this is to choose a keyword, with or without repeated letters, for it is open and then add the remaining letters of the alphabet which have been omitted. For example, suppose the keyword "UNITED STATES" is selected; repeated letters are omitted and the remaining letters are added to the Polybius square as follows:

U N I T E
S T A T E
H O P C R
L P Q R
W X Y Z

and the resulting alphabet is taken off in columns from 1 up to spaces B D F H J K L P Q R U.

The Polybius square then would be:

B D V L E
W O C F C
U C K S Z
O Q A P U

Using a normal or standard square, and using THEE for the keyword as before, and with the same example text, select from the square the digits which

RIGO MUD
5X35,5
2"X14"





RIGO WHITE 5X35,5 2"X14"



RIGO BLACK 5X35,5 2"X14"

TECHNICAL DETAILS

RIGO

TECHNOLOGY PORCELLANATO ESTRUSO A TUTTA MASSA - FULL BODY EXTRUDED PORCELAIN

FINISH OPACO - NATURAL

FEATURES TONI E CALIBRI DIFFERENTI SONO CARATTERISTICHE INTRINSECHE DEL PRODOTTO
SLIGHT SHADE AND CALIBER VARIATIONS ARE AN INTRINSIC PROPERTY OF THIS ARTISAN PORCELAIN

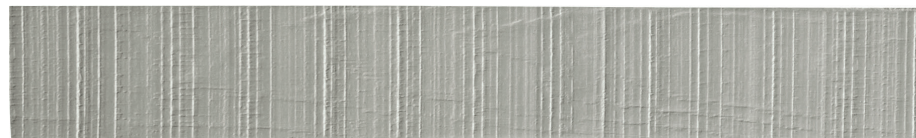
SIZES 5X35,5 2"X14"

THICKNESS 8 MM

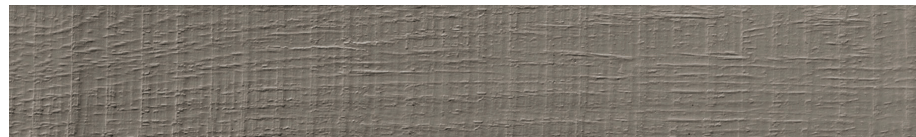
RIGO COLORS



4100233 Rigo White



4100234 Rigo Grey



4100235 Rigo Mud



4100236 Rigo Black

RIGO PACKING

RIGO	pcs	m ²	kg/box	box/pal	m ² /pal	kg/pal
5x35,5 2"x14"	52	0,923	16,28	40	36,92	651,20

RIGO colori stucchi consigliati / adviced grouts colors

WHITE	Mapei 100 White
GREY	Mapei 110 Manhattan 2000
BLACK	Mapei 120 Black
MUD	Mapei 113 Cement Grey

INFO

Questo è un manufatto artigianale prodotto per estrusione e con materie prime naturali, per questi motivi presenta differenze di calibro, irregolarità superficiali o di planarità e variazioni di tono. Queste sono da considerarsi caratteristiche proprie del materiale. Se valorizzate durante la posa esaltano l'effetto estetico che lo differenzia dai normali prodotti industriali. In produzione, durante la scelta finale di ogni lotto, viene selezionato il tono, pur se può rimanere una diversità di rifrazione della luce tra i pezzi singoli che può dare l'impressione di differenza di colore. In fase di posa è importante aprire una o più scatole e disporre i pezzi a terra per verificare questo effetto, osservando anche da diverse angolazioni. Qualora si notino differenze procedere all'installazione miscelando in modo casuale i pezzi delle varie scatole per evitare l'effetto "strisce" o "bande". Posare il materiale utilizzando collante per il grès porcellanato. Trattandosi di materiale estruso di forma non regolare consigliamo di posare i pezzi accostandoli e ruotandoli senza usare distanziali, in modo che le fughe si vengano a formare automaticamente in modo ideale. Per compensare eventuali differenze di planarità è possibile caricare di collante anche il pezzo stesso.

This is an extruded handcrafted product made from natural raw materials. It may therefore present differences in caliber, flatness, surface irregularities and variations in shade. These should be considered as features of the material and not defects. If one takes advantage of them during installation, they enhance the aesthetic effects that distinguish them from standard industrial products. During the production process, the shade is chosen at the final sorting stage of each batch, even if there may be a different refraction of light between the individual pieces that can give the impression that the colour is different. During installation, it is important to open one or more boxes and arrange the pieces on the floor in order to examine this effect and to view the pieces from different angles. If differences are noticed, mix random pieces from different boxes when installing them in order to avoid the "strip and "band" effect. Install the product using an adhesive suitable for porcelain stoneware. Being an extruded product, which doesn't have a regular shape, we recommend that the pieces be placed next to one another, without using spacers, and rotated so that the joints become formed naturally. Adhesive can also be applied to the back of the tile itself in order to compensate for differences in flatness.

RIGO TECHNICAL FEATURES



NORMA STANDARD	CARATTERISTICHE FEATURES	VALORE PRESCRITTO REQUIRED VALUE	RIGO
ISO 10545/2	DIMENSIONI - SIZE		
	lunghezza e larghezza length and width	± 2 % / ± 4 mm	± 2 % / ± 4 mm
	spessore thickness	± 10 %	± 10 %
	rettilinearità degli spigoli straightness of edges	± 0,6 %	± 0,6 %
	ortogonalità wedging	± 1 %	± 1 %
	planarità flatness	± 1,5 %	± 1,5 %
ISO 10545/3	assorbimento d'acqua water absorption	<0,5 %	0,3 %
ASTM C373	water absorption	<0,5 %	0,3 %
ISO 10545/9	resistenza agli sbalzi termici thermal shock	nessuna alterazione visibile no visible alteration	resiste resistant
ASTM C484	thermal shock	unaffected	unaffected
ISO 10545/12	resistenza al gelo frost/freeze resistance	nessuna alterazione visibile no visible alteration	resiste resistant
ASTM C1026	frost/freeze resistance	unaffected	unaffected
ISO 10545/13	resistenza agli attacchi chimici chemical resistance	nessuna alterazione visibile no visible alteration	LA ≥ HB
ASTM C650	chemical resistance		A
ISO 10545/4	resistenza alla flessione breaking strength	≥ 28 N/ mm ²	30 N/ mm ²
ISO 10545/6	resistenza all'abrasione profonda visible abrasion resistance	< 275 mm ³	< 165 mm ³
ASTM C1243	Resistance to deep abrasion of unglazed tiles	< 175 mm ³ (0,011 in ³)	< 165 mm ³
ISO 10545/14	resistenza alle macchie stain resistance	≥ CLASSE 3	4
ASTM C1378	stain resistance	≥ CLASSE 3	5
DIN 51130	scivolosità anti-slip		R10
DCOF	dynamic coefficient of friction	> 0,42	0,73
ANSI A137.1	aesthetic classes	V0-V4	V3

L'eleganza della semplicità.

Un processo di rivalorizzazione e recupero di piccole porzioni di legno, scartate durante le lavorazioni principali.

In 4 colorazioni: White, Grey, Mud e Black su un supporto tutta massa, per rendere protagonista solo la materia e la sua lavorazione.

The elegance in simplicity.

A process of upgrading and recycling of small portions of wood initially discarded.

In 4 colors: White, Grey, Mud and Black on a full body, to make only material and its processing the real protagonist.



41zero42.it