

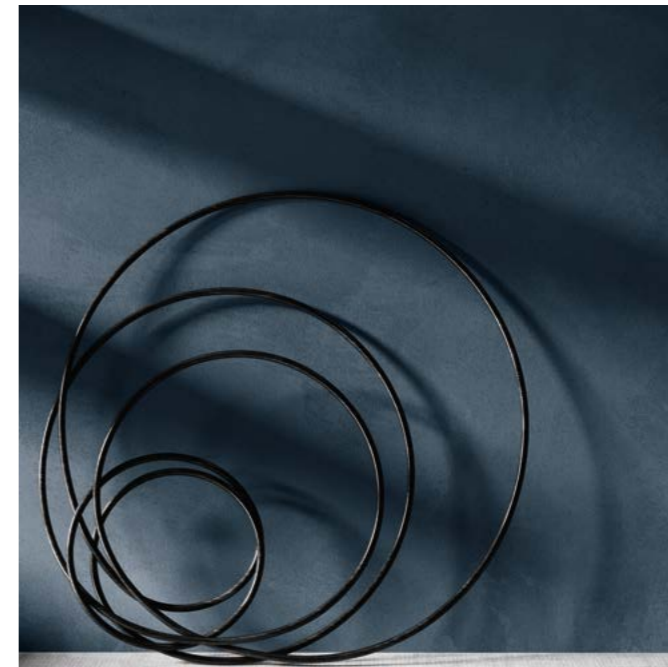
SET



m
8
9
35
36
45
46
17
18
9
9

ceramica
SANT'AGOSTINO

SET



I linguaggi contemporanei, non solo del progetto ma della stessa vita quotidiana, sono sempre più fluidi, nei valori estetici, sociali, economici. E nulla è più eclettico della materia ceramica evoluta, che sembra giocare liberamente - in un'alchimia di sintesi fra derivazioni, incroci e composizioni - con le altre materie: studiandole, interpretandole e plasmandole per renderle più adatte ad ogni esigenza del costruire e dell'abitare contemporanei.

SET è una vera e propria fusione di materiali diversi - cemento: SET CONCRETE; cemento-tessuto: SET DRESS e SET TARTAN; cemento con marmo: SET GEM; vernice: SET WALL; legno: METROWOOD; decorazione: METROSIGNS - che si incrociano fino ad unirsi l'uno con l'altro per dare vita a piccoli capolavori ceramici.

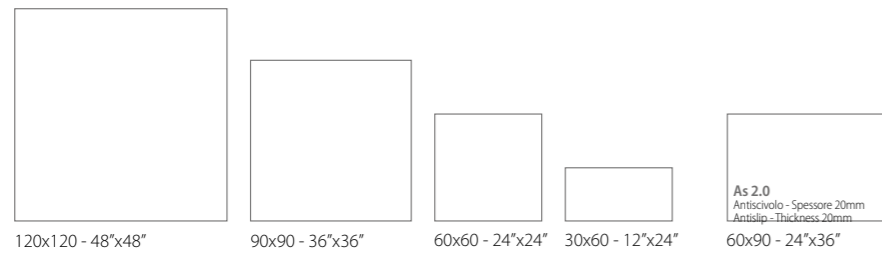
The contemporary languages, not only of the project but the same everyday life, are increasingly fluid, in the aesthetic values, social, economic. Nothing is more eclectic than the evolved ceramic matter, which seems to play free - in an alchemy of synthesis between derivations, intersections and compositions - with other materials: by studying, interpreting and shaping to make them more suitable for all the requirements of contemporary building and living.

SET is a true fusion of different materials - cement: SET CONCRETE; cement-fabric: SET DRESS and SET TARTAN; cement with marble: SET GEM; paint: SET WALL; wood: METROWOOD; decoration: METROSIGNS - that intersect to join up one to the other and give life to small ceramic masterpieces.

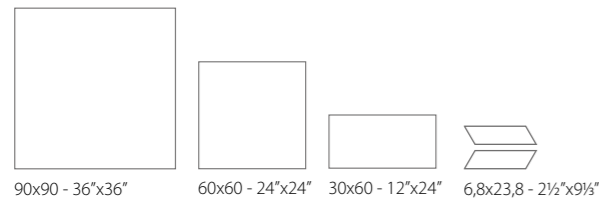


FORMATI • SIZES

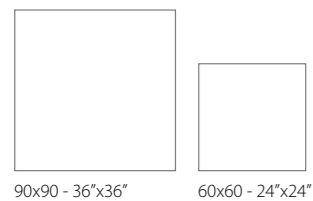
SET CONCRETE



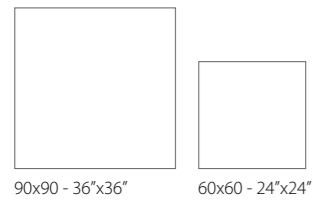
SET DRESS



SET GEM



SET TARTAN

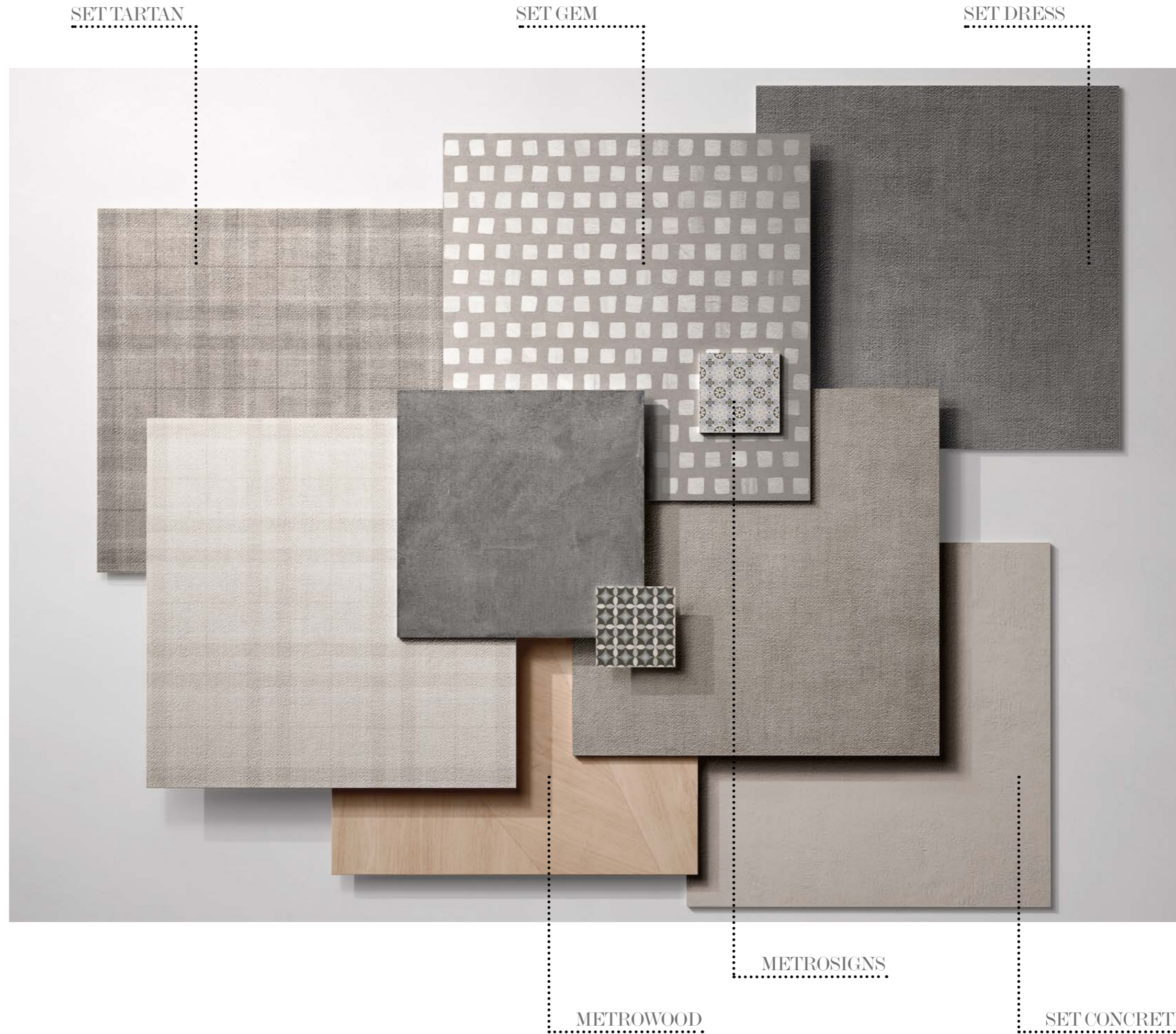


METROWOOD



Gres Porcellanato Rettificato

Porcelain Rectified
 Feinsteinzeug Kalibriert
 Grès cérame Rectifié
 Керамогранит Ректифицированная





LAVORAZIONE MANUALE DI CASSERI DI CEMENTO

6

Manual processing of
concrete structures

Manuelle Verarbeitung
von Zementverschalungen

Travail artisanal du béton
brut de coffrage

Ручная обработка
цементных опалубок

Set Concrete Dark 120120



7



Set Dress Dark 9090

ARMATURA DI UN TAPPETO A RIGHE DI COTONE IMMERSO NEL CEMENTO

10

The weft of entwined stripes of a
cotton carpet set in concrete

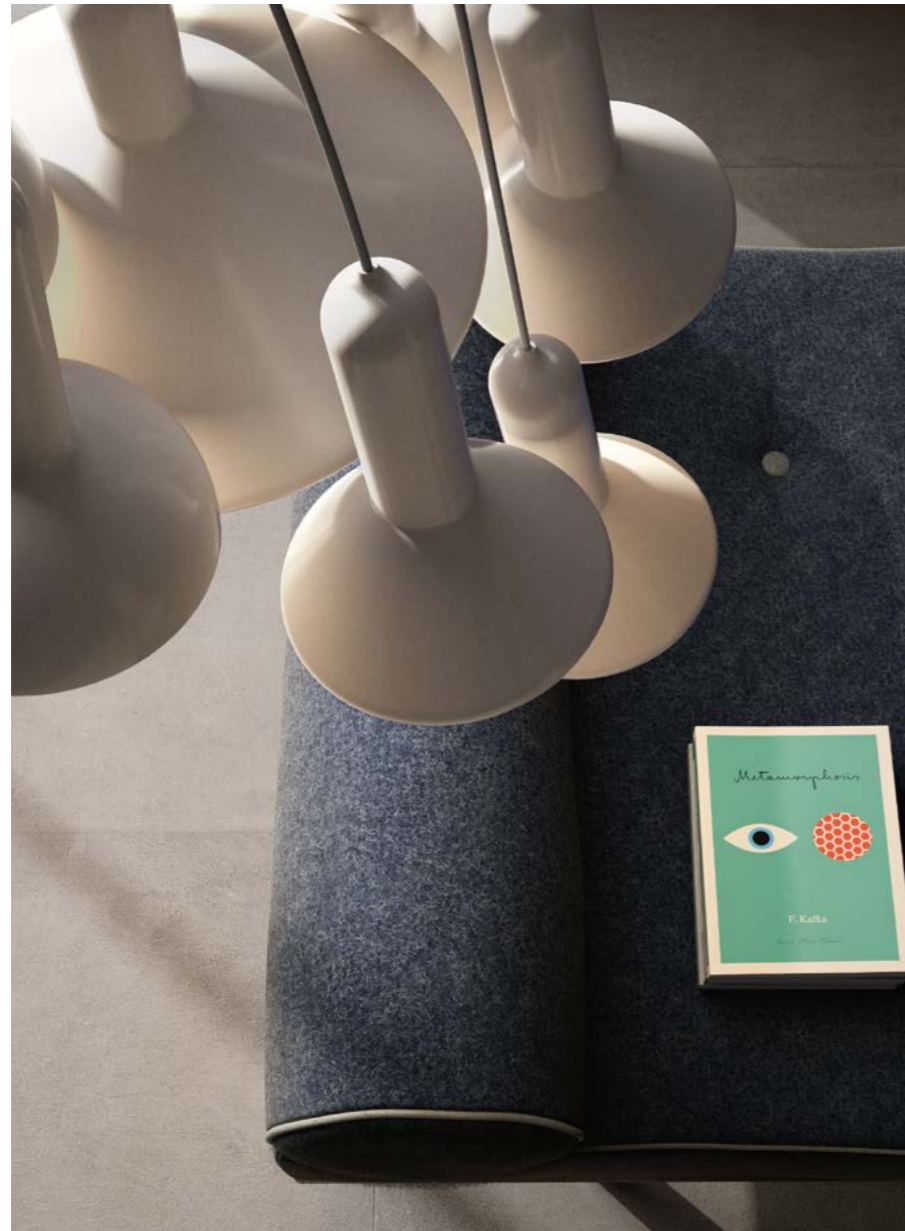
Bindung eines teppichs mit
Baumwollstreifen in zement getauchtn

Armure d'un tapis a rayures de coton
immerge' dans le beton

Армирование х/б подложкой в
полоску, погружённой в цемент

Set Dress Dark 9090





Set Concrete Grey 9090

Wall / Set Dress Grey 9090

L'ARTE DI COMPORRE IL SOFISTICATO EQUILIBRIO DELLE MATERIE NELLO SPAZIO CONTEMPORANEO

14

The art of creating a sophisticated
balance of materials in contemporary
space

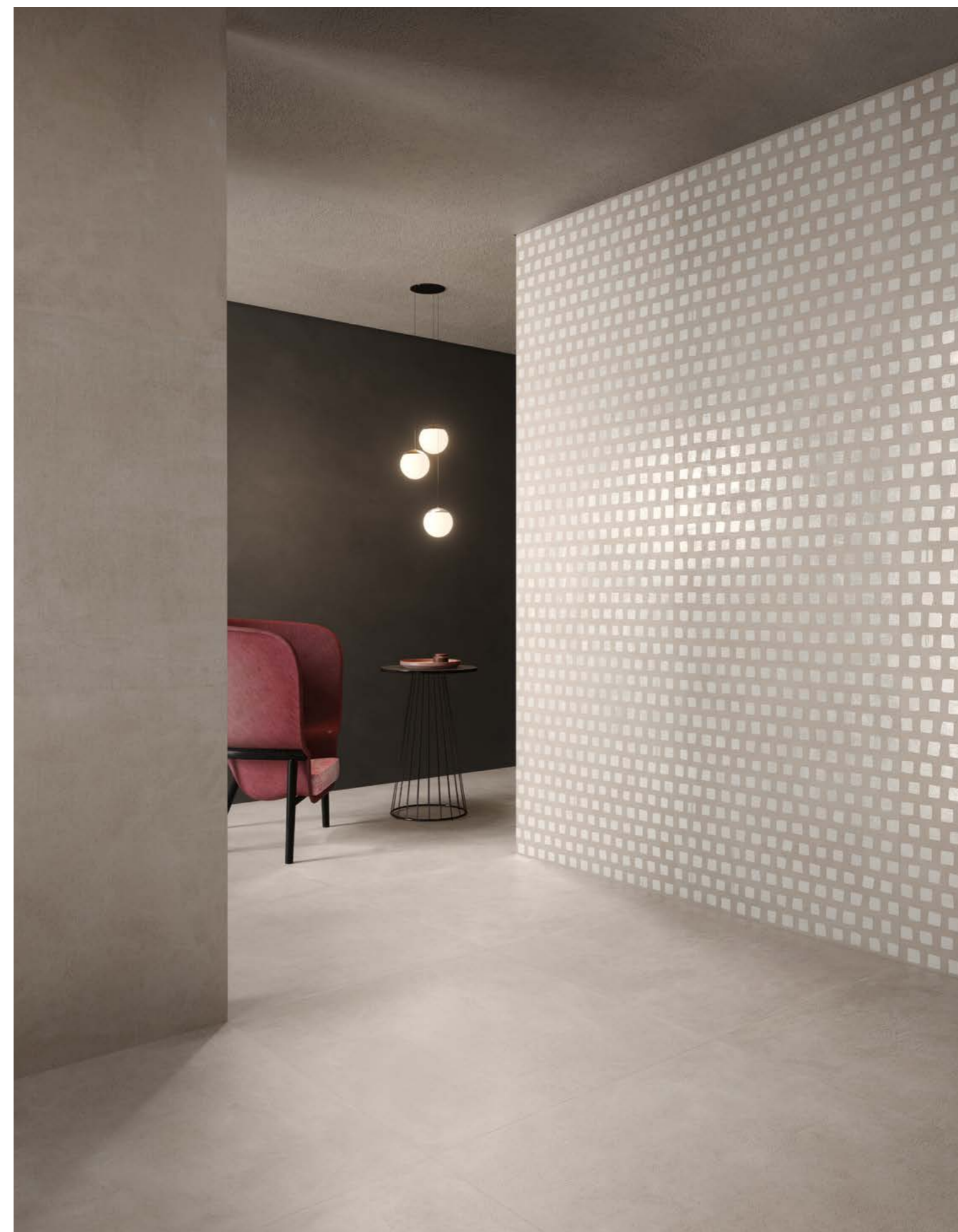
Die Kunst, ein ausgeklügeltes
gleichgewicht zwischen den
Rohstoffen herzustellen in
zeitgenössischer Umgebung

L'art de composer un sophistiqué
équilibre des matières dans l'espace
contemporain

Искусство создавать
изысканную гармонию материалов
в современном пространстве

Set Concrete Pearl 9090

Wall / Set Gem Pearl 9090, Set Concrete Pearl 9090



15



> Set Gem Pearl 9090
 Wall / Metrowood Natural 9090,
 Bianco Lasa 60120 Kry (THEMAR Collection)





< Set Gem Pearl 9090

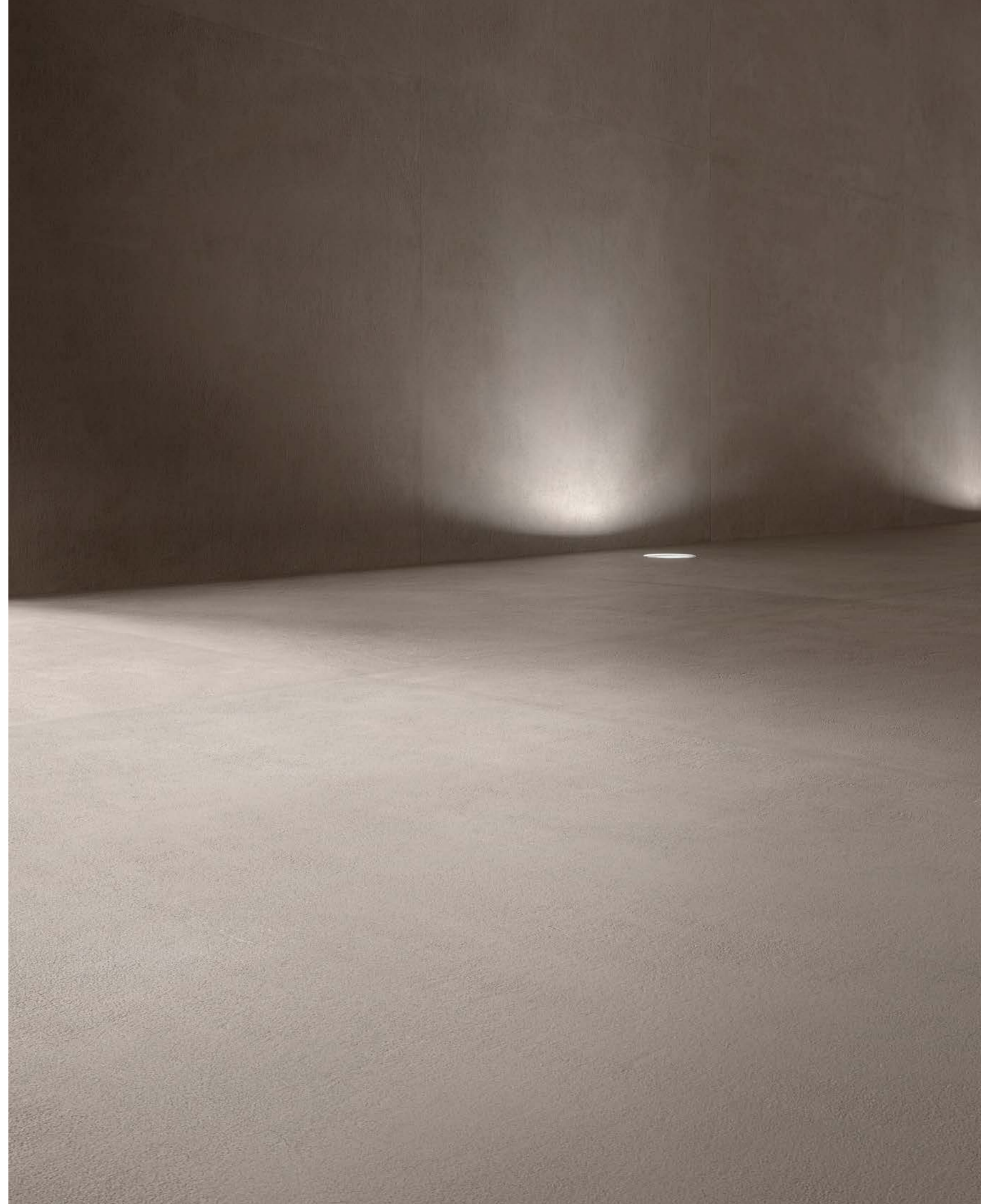
Wall / Set Concrete Pearl 9090,
Bianco Lasa 60120 Kry (THEMAR Collection)



Set Concrete Grey 120120
Wall / Set Concrete Grey 120120, Metrowood Natural 9090



Metrowood Natural 9090

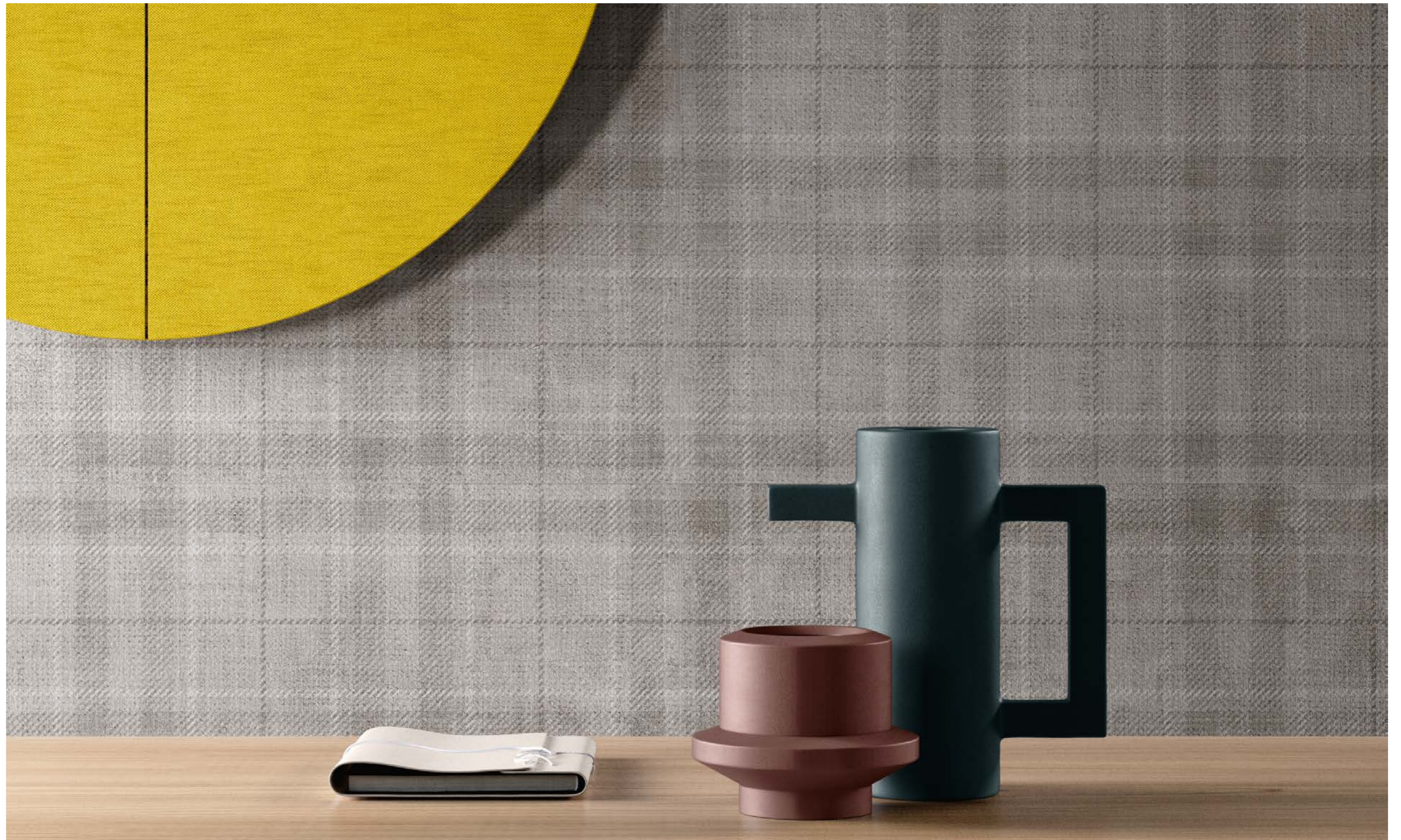


> Set Concrete Grey 120120



Set Tartan Grey 9090

Wall / Set Tartan Grey 9090, Set Concrete Grey 9090



Set Tartan Grey 9090



Set Tartan White 9090



> Set Tartan White 9090



Set Concrete Pearl 9090



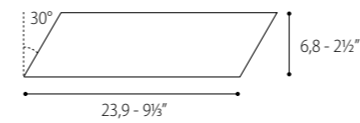
> Set Concrete Pearl 9090
Wall / Set Wall White 1590



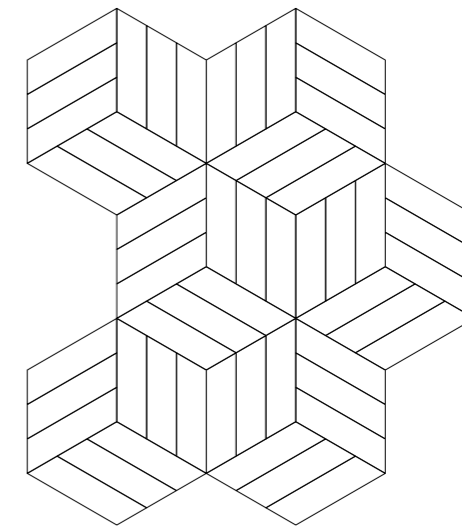
Set Concrete Dark 6060

Wall / Set Dress Pearl Chevron, Set Dress White Chevron

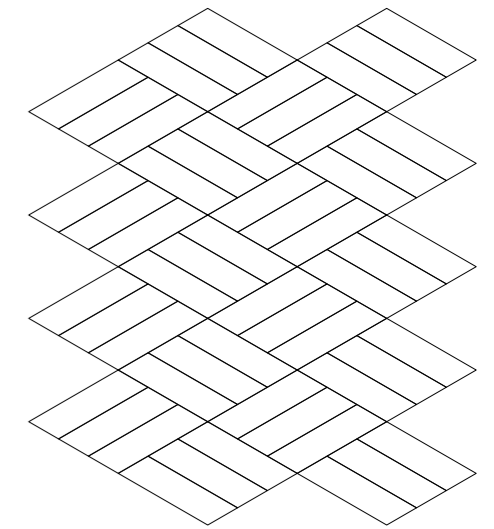
| Set Dress Chevron



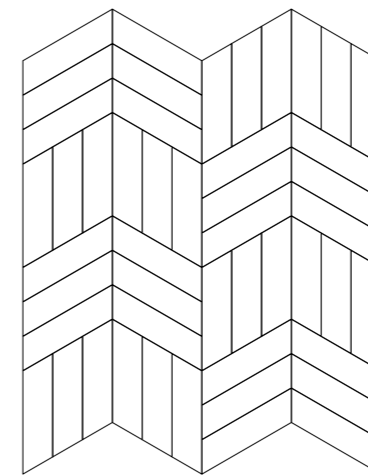
01



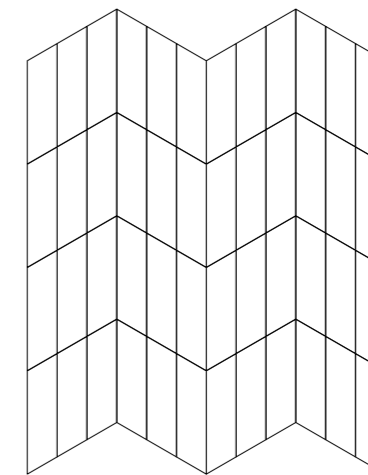
02



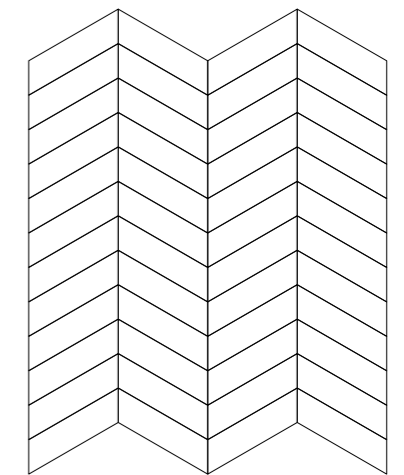
03



04



05



Lo spirito di prodotto ci guida ad esplorare le vie del design d'interni, incrociandole con la ricchezza di forma e sostanza dei volti sempre nuovi e diversi di una materia universale come la ceramica.

The product spirit takes us to explore the paths of interior design, crossing them with the richness in form and substance of the always new and different faces of a universal material like ceramics.

Durch unser Produktbewusstsein ergründen wir die Möglichkeiten des Innen-Designs denen wir mit stets neuartigem Formenreichtum und äußerlicher Substanz eines universellen Stoffes wie Keramik begegnen.

L'esprit du produit nous conduit à la recherche des chemins du design d'intérieur, en le mélangeant avec la richesse des formes et des éléments, toujours nouveaux et différents, d'une matière universelle comme la céramique.

Сама сущность изделия побуждает нас открывать всё новые пути интерьерного дизайна, скрещивая их с богатством форм и содержанием всегда новых и разных лицевых поверхностей такого универсального материала, как керамика.

PATCHWORK DI CEMENTINE CON 45 DISEGNI DIVERSI PER DECORARE A PAVIMENTO E PARETE OGNI TIPO DI AMBIENTE

34

Mix of cementine with 45 different patterns to decorate floor and wall in any kind of environment

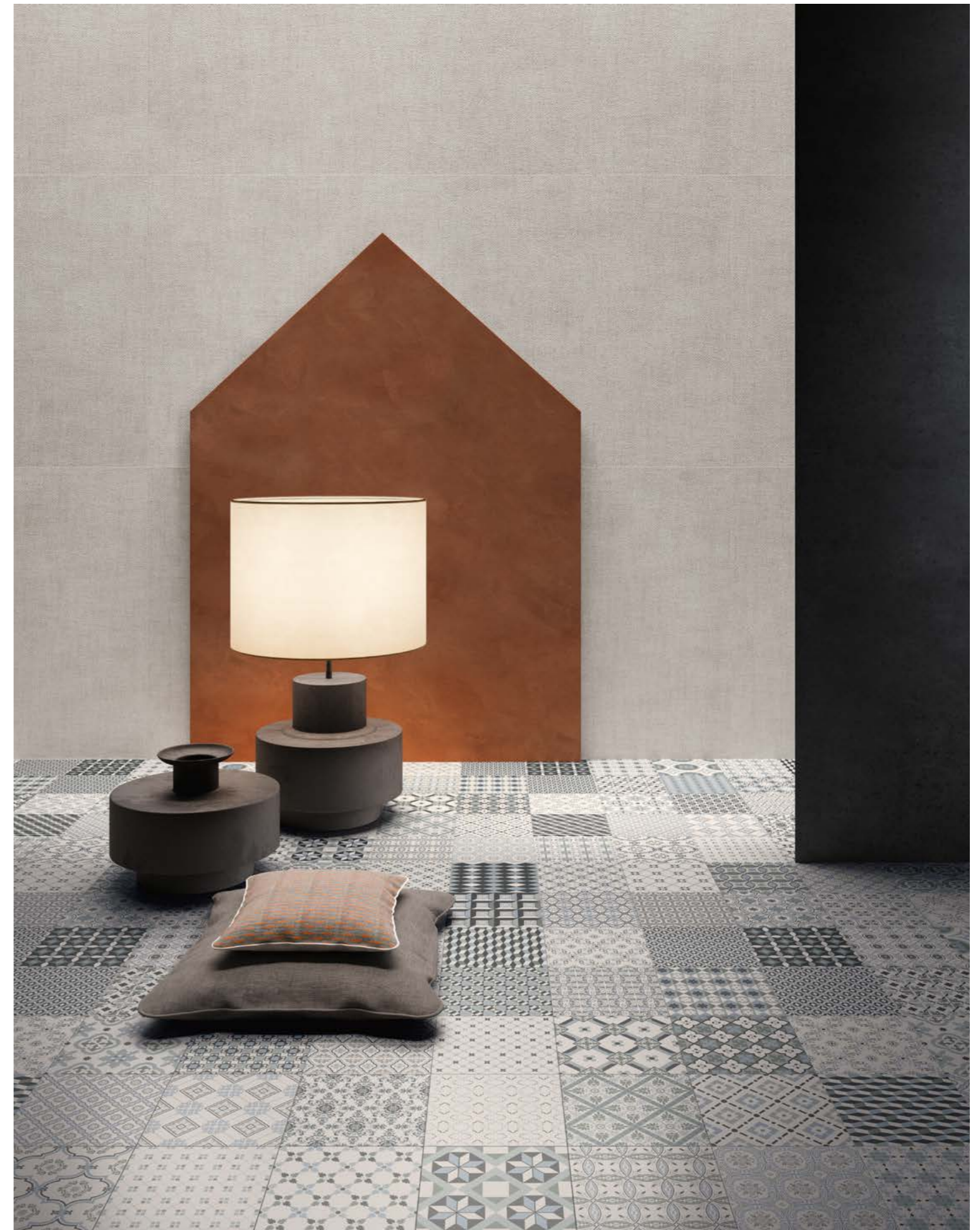
Zement-Patchwork mit 45 verschiedenen Designs zur Dekoration von Boden und Wand jede Art von Umgebung

Combinaison de cementine avec 45 dessins pour décorer le sol et le mur de tout type de pièce

Лоскутная техника пэчворк в глазури с 45 разными рисунками для декорирования пола и стен в любой среде

Metrosigns

Wall / Set Dress Pearl 9090

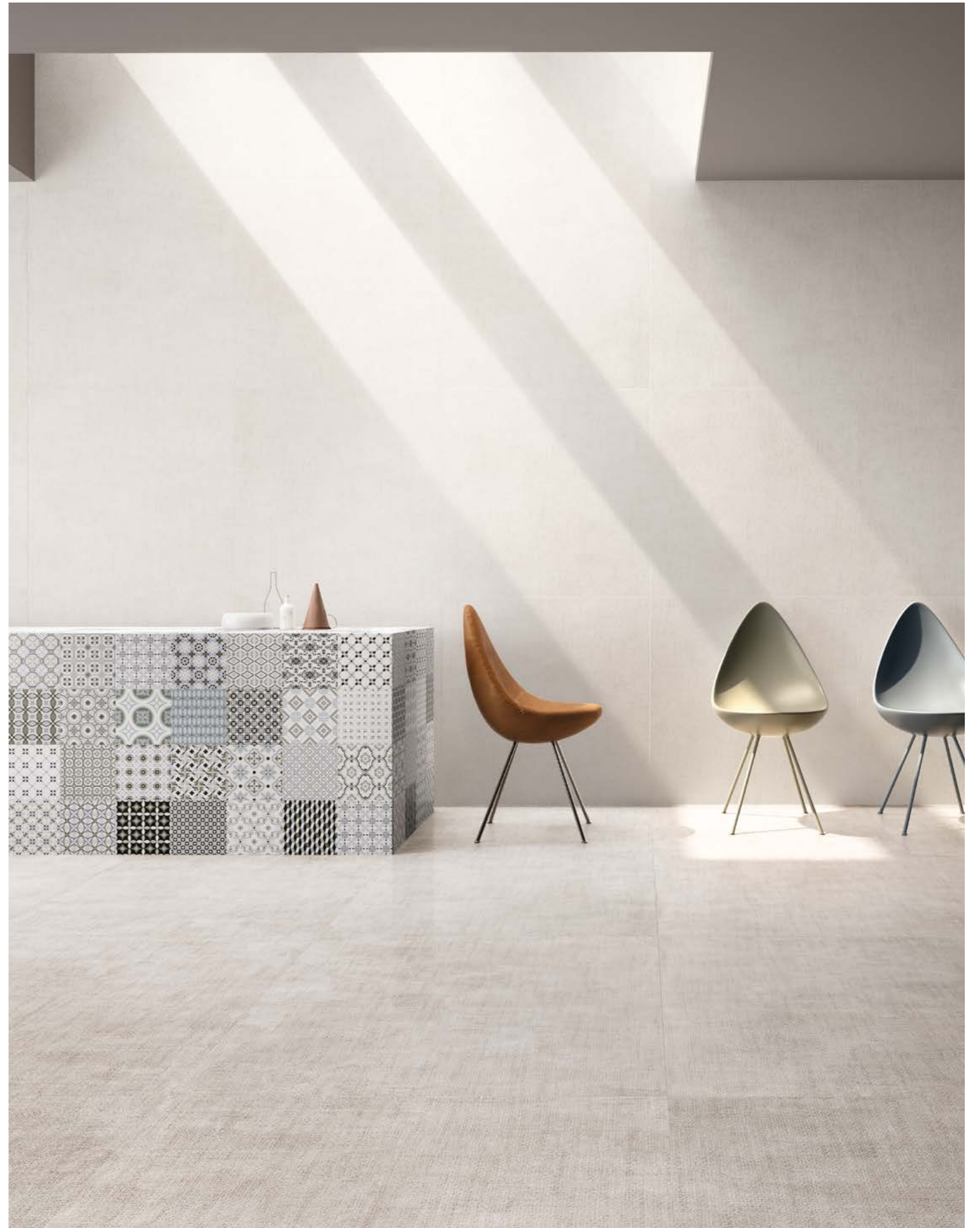


35



Set Dress White 9090

> Set Dress White 9090
Wall / Set Dress White 9090, Metrosigns





Metrowood Natural 9090, Set Concrete White 3060

Floor / Metrosigns



Set Concrete Pearl 3060 , Set Wall White 1590

Floor / Metrowood Natural 9090

AS 2.0

40



Set Concrete Dark 6090 As 2.0

41



Set Concrete Pearl 6090 As 2.0

AS 2.0

Antiscivolo	Antislip	Trittsicher	Antidérapant	Противоскользящий
Spessore 20 mm	Thickness 20 mm	Stärke 20 mm.	Épaisseur 20 mm	Толщина 20 ММ
Resistente agli sbalzi termici	Resistant to thermal shock	Unempfindlich gegen Temperaturschwankungen	Résistant aux chocs thermiques	Устойчивый к перепадам температур
Ingelivo - Ignifugo	Frost resistant - Fire resistant	Frostsicher - Feuerfest	Ingélif - Résistant au feu	Морозостойкий
Inalterabile nel tempo	Time resistant	Zeitbeständig (lange Lebensdauer)	Inaltérable dans le temps	Огнеупорный
Facilissimo da posare	Easy to lay	Leichte Verlegung	Mise en œuvre très simple	Долговечный
Nel caso di posa a secco è semplice da riposizionare o rimuovere, non servono lavori di muratura	In case of dry tiling it's easy to replace or remove, no walling	Bei der trockenen Verlegung einfach zu positionieren oder zu entfernen, es sind keine Maurerarbeiten erforderlich	Dans le cas de pose à sec est facile à replacer ou enlever, ils ne sont pas nécessaires des travaux de maçonnerie	Простой в укладке: при укладке сухим методом его легко установить и снять, без кладочного раствора.
Pavimentazioni sopraelevate *	Raised floors *	Doppelböden *	Pose sur plots *	Мощение на приподнятом основании *



Rettificata
Rectified
Kalibriert
Rectifié
Ректифицированная

60x90 - 24"x36"



Posa a secco su erba
Dry laying on grass
Trockene Verlegung auf Grass
Pose sur pelouse
Сухая укладка на травяной газон



Posa a secco su ghiaia
Dry laying on gravel
Trockene Verlegung auf Kies
Pose sur gravillon
Сухая укладка на щебень



Posa a secco su sabbia
Dry laying on sand
Trockene Verlegung auf Sand
Pose sur sable
Сухая укладка на песок



Pavimentazioni sopraelevate
Raised floors
Doppelböden
Pose sur plots
Мощение на приподнятом основании



*** AVVERTENZE PER LA POSA SOPRAELEVATA**
Il formato 60x90 in 20 mm di spessore è ritenuto idoneo per la posa su massetto, su ghiaia, su sabbia, su erba, o su supporti ad una altezza massima di 2 cm utilizzando 6 supporti per lastra in modo da distribuire uniformemente i carichi. Per una sopraelevazione compresa tra i 2 ed i 10 cm è necessaria l'applicazione di una rete in fibra di vetro nella parte inferiore della lastra (foglio di acciaio zincato o rete plus per il formato 60x90). Una sopraelevazione superiore ai 10 cm è vincolata alla applicazione alla parte retrostante della lastra di un foglio di lamiera zincata.

*** WARNINGS FOR RAISED FLOOR LAYING**
Size 60x90 with 20 mm thickness is considered suitable for laying on screed, gravel, sand, grass or supports at a maximum height of 2 cm, using 6 supports per slab in order to distribute loads uniformly. For raised laying between 2 and 10 cm you must apply a fibre glass mesh to the rear of the slab (galvanised steel sheet or plus mesh for size 60x90). For raised floors of more than 10 cm, galvanised steel sheet must be applied to the rear of the slab.

*** HINWEISE FÜR DIE INSTALLATION ALS DOPPELBÖDEN**
Das Format 60x90 in 20 mm Stärke eist sich für die Verlegung auf Estrich, Kies, Sand, Gras oder Trägern mit einer maximalen Höhe von 2 cm, indem man 6 Stützen pro Platte verwendet, um die Lasten gleichmäßig zu verteilen. Für eine Verlegung in einer Höhe zwischen 2 und 10 cm muss ein Glasfasernetz auf der Unterseite der Platte angebracht werden (verzinkte Stahlfolie oder Plus-Netz beim Format 60x90). In einer Höhe über 10 cm darf nur verlegt werden, wenn man eine verzinkte Blechfolie auf der Rückseite der Platte anbringt.

*** MISES EN GARDE POUR LA POSE SURÉLEVÉE**
Le format 60x90 en 20 mm d'épaisseur est appropriés à la pose sur chape, gravier, sable, pelouse ou sur vérins à une hauteur maximum de 2 cm, en utilisant 6 vérins par plaque, de manière à répartir équitablement les charges. Pour une surélévation comprise entre 2 et 10 cm, il est nécessaire d'appliquer un filet en fibre de verre au dos de la plaque (feuille d'acier galvanisé ou filet « plus » pour le format de 60x90). Une surélévation de plus de 10 cm exige l'application d'une feuille de tôle galvanisée au dos de la plaque.

*** РЕКОМЕНДАЦИИ ПО УКЛАДКЕ ПЛИТ НА ФАЛЬШПОЛ**
Форматы плит 60x90 толщиной 20 мм считаются пригодными для укладки на стяжку, гравий, песок, траву или на основания высотой не более 2 см при использовании 6 стоек для каждой плиты для равномерного распределения нагрузок. Для поднятия уровня пола на высоту от 2 до 10 см необходимо приклеивать к нижней стороне плит сетку из стекловолокна (лист оцинкованной стали или сетку plus для формата 60x90). При поднятии уровня пола на высоту более 10 см обязательно следует крепить к нижней стороне плит лист из оцинкованной стали.

TECHNICAL INFORMATION

Gres porcellanato

Porcelain

Feinsteinzeug

Grès cérame

Керамогранит

Rettificato

Rectified

Kalibriert

Rectifié

Ректифицированная



RET	V2	☀️	5	A+B	R10	ASTM	DCOF	10mm	EN 14411 APPENDICE G Bla GL
As 2.0	RET	V2	☀️	5	A+B	R11	20mm	EN 14411 APPENDICE G Bla UGL	

Colori - Colours - Farben - Couleurs - Цвета

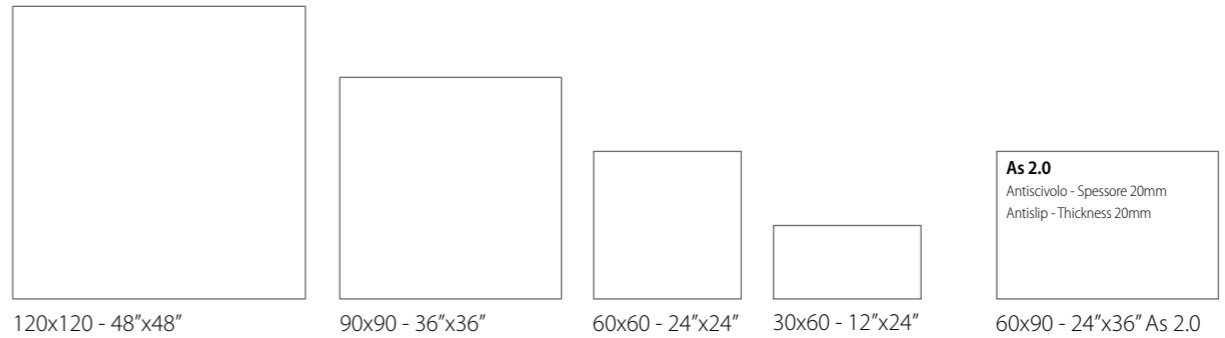
Set Concrete White Set Concrete Pearl Set Concrete Grey Set Concrete Dark



Set Concrete White 120120 Set Concrete White 9090 Set Concrete White 6060 Set Concrete White 3060	Set Concrete Pearl 120120 Set Concrete Pearl 9090 Set Concrete Pearl 6060 Set Concrete Pearl 3060	Set Concrete Grey 120120 Set Concrete Grey 9090 Set Concrete Grey 6060 Set Concrete Grey 3060	Set Concrete Dark 120120 Set Concrete Dark 9090 Set Concrete Dark 6060 Set Concrete Dark 3060
Set Concrete White 6090 As 2.0 Mosaico Set Concrete White	Set Concrete Pearl 6090 As 2.0 Mosaico Set Concrete Pearl	Set Concrete Grey 6090 As 2.0 Mosaico Set Concrete Grey	Set Concrete Dark 6090 As 2.0 Mosaico Set Concrete Dark

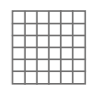
Formato Size Formate Format Форматы	Numero grafiche Number of patterns Grafische Nummer Nombre d'images Количество графических оформлений
120x120 - 48"x48"	30
90x90 - 36"x36"	40
60x60 - 24"x24"	55
30x60 - 12"x24"	110
60x90 - 24"x36" As 2.0	45

Formati - Sizes - Formate - Formats - Форматы



Su rete
On net
Auf Netz
Sur trame
Ha сетке

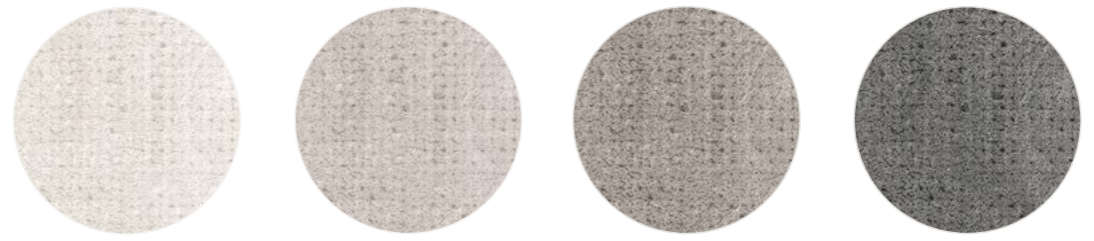
30x30 - 12"x12"



Mosaico Set Concrete

Colori - Colours - Farben - Couleurs - Цвета

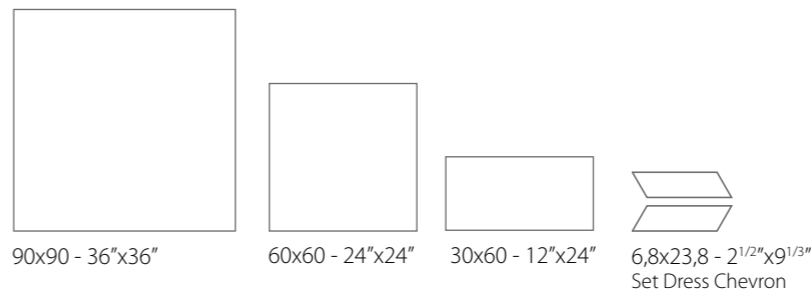
Set Dress White Set Dress Pearl Set Dress Grey Set Dress Dark



Set Dress White 9090 Set Dress White 6060 Set Dress White 3060 Set Dress White Chevron Mosaico Set Dress White	Set Dress Pearl 9090 Set Dress Pearl 6060 Set Dress Pearl 3060 Set Dress Pearl Chevron Mosaico Set Dress Pearl	Set Dress Grey 9090 Set Dress Grey 6060 Set Dress Grey 3060 Set Dress Grey Chevron Mosaico Set Dress Grey	Set Dress Dark 9090 Set Dress Dark 6060 Set Dress Dark 3060 Set Dress Dark Chevron Mosaico Set Dress Dark
--	--	---	---

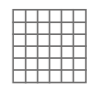
Formato Size Formate Format Форматы	Numero grafiche Number of patterns Grafische Nummer Nombre d'images Количество графических оформлений
90x90 - 36"x36"	40
60x60 - 24"x24"	55
30x60 - 12"x24"	110

Formati - Sizes - Formate - Formats - Форматы



Su rete
On net
Auf Netz
Sur trame
Ha сетке

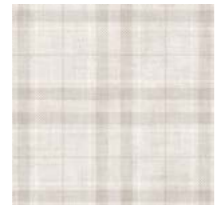
30x30 - 12"x12"



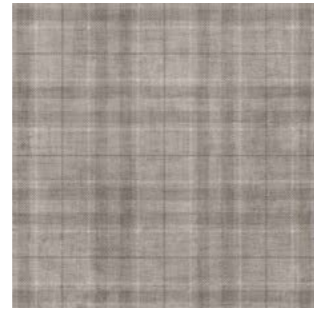
Mosaico Set Dress



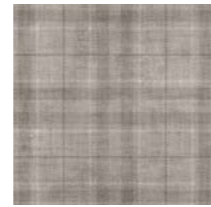
Set Tartan White 9090
90x90 - 36"x36"



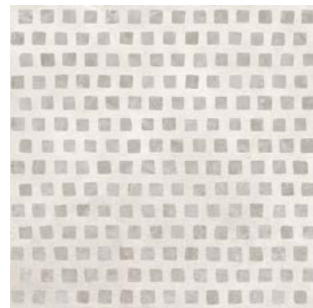
Set Tartan White 6060
60x60 - 24"x24"



Set Tartan Grey 9090
90x90 - 36"x36"



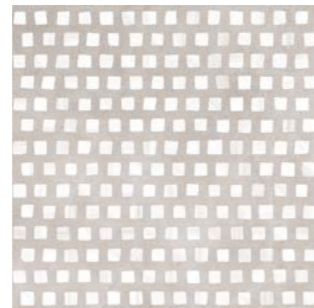
Set Tartan Grey 6060
60x60 - 24"x24"



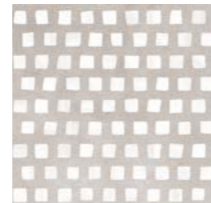
Set Gem White 9090
90x90 - 36"x36"



Set Gem White 6060
60x60 - 24"x24"



Set Gem Pearl 9090
90x90 - 36"x36"



Set Gem Pearl 6060
60x60 - 24"x24"



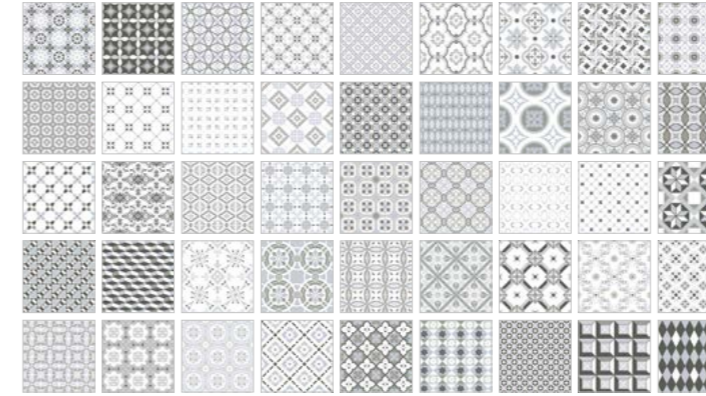
Metrowood Natural 9090
90x90 - 36"x36"



Set Wall White 1590
15x90 - 6"x36"



Ang. Set Wall White 1590
15x74 - 6"x30"



Metrosigns
20x20 - 8"x8"

Metrosigns RET V4 4 A R10 B.C.R. DCOF 10mm

Metrosigns si compone di **45 varianti grafiche**.
Viene fornita in scatole da **27 pezzi**, all'interno delle quali le grafiche sono miscelate in modo casuale.

Metrosigns consists of **45 graphic variations**.
It is supplied in boxes of **27 pieces**, with randomly-mixed graphics inside each box.

Metrosigns umfasst **45 grafische Varianten**.
Sie wird in **27-Stück**-Schachteln geliefert, in denen die Grafiken jeweils nach dem Zufallsprinzip vermischt werden.

Metrosigns est composé par **45 décors différent**.
Il est livré dans des boîtes de **27 pièces**, dans les quelles, les décors sont mélangés d'une façon aléatoire.

Metrosigns включает в себя **45 графических вариантов**.
Поставляется в коробках, по **27 штук** в каждой коробке, где варианты графического оформления подобраны случайным образом.



Pezzi speciali - Special pieces - Spezial-Stücke - Pièces spéciales - Специальных элементов

<p>33x120 - 13"x48" Gradone 120 Set</p> <p>Concrete White Concrete Pearl Concrete Grey Concrete Dark</p> <p>33x90 - 13"x36" Gradone 90 Set</p> <p>Concrete White Concrete Pearl Concrete Grey Concrete Dark</p>	<p>33x120 - 13"x48" Ang. Gradone 120 Sx Set</p> <p>Concrete White Concrete Pearl Concrete Grey Concrete Dark</p> <p>33x90 - 13"x36" Ang. Gradone 90 Sx Set</p> <p>Concrete White Concrete Pearl Concrete Grey Concrete Dark</p>	<p>33x120 - 13"x48" Ang. Gradone 120 Dx Set</p> <p>Concrete White Concrete Pearl Concrete Grey Concrete Dark</p> <p>33x90 - 13"x36" Ang. Gradone 90 Dx Set</p> <p>Concrete White Concrete Pearl Concrete Grey Concrete Dark</p>	<p>7,3x90 - 3^{7/8}"x36" Battiscopa Set/90</p> <p>Concrete White Concrete Pearl Concrete Grey Concrete Dark</p> <p>Dress White Dress Pearl Dress Grey Dress Dark</p>	<p>7,3x60 - 3^{7/8}"x24" Battiscopa Set/60</p> <p>Concrete White Concrete Pearl Concrete Grey Concrete Dark</p> <p>Dress White Dress Pearl Dress Grey Dress Dark</p>	<p>1,5x30 - 3/4"x12" Quarter Round Set</p> <p>Concrete White Concrete Pearl Concrete Grey Concrete Dark</p> <p>Dress White Dress Pearl Dress Grey Dress Dark</p>
---	---	---	---	---	---

Imballi e pesi - Packing and weights - Verpackungen und Gewichte - Emballage et poids - Вес и упаковка

Formato Size Format Форматы (cm)	Scatola/Box				Pallet			Montato su rete On net Auf Netz Sur trame Собрана на сетке	
	Pzz./Scat. Pcs/Box Stck/Kart. Pcs/Boite Шт/Кор.	Mq/Scat. Sqm/Box Qm/Kart. Mc/Boite Кв.м/кор.	Kg/Scat. Kg/Box Kg/Kart. Kg/Boite Кг в/кор.	Kg/Mq Kg/Sqm Kg/Qm Kg/Mc Кг в/Кв.м	Scatole Boxes Kart. Boites Коробок в палете	Mq Sqm Qm Mc Кв.м	Kg kg в палете		
120x120	2	2,88	63,4	22	20	57,6	1.268	<	
90x90	2	1,62	35,6	22	20	32,4	713		
60x90	As 2.0	1	0,55	23,8	44,3	32	17,6		762
60x60	4	1,44	31,7	22	30	43,2	951		
30x60	7	1,26	27,7	22	32	40,32	886		
15x90	Set Wall	9	1,22	26,8	22	32	39,04		858
6,8x23,9	Chevron	24	0,39	8,6	22	54	21,06		465
30x30	Mosaico	6	0,54	11,3	20,9	60	32,4		678
20x20	Metrosigns	17	0,68	15	22	96	65,28		1440

Consigli per la posa - Suggestion for laying - Ratschläge für die Verlegung - Conseil pour la pose - Советы по укладке

<p>Viste le caratteristiche della serie si consiglia:</p> <ul style="list-style-type: none"> Fuga 2 mm Per i formati 30x60 si consigliano pose affiancate o a corriere sfalsate di 3/4 Colore fuga <ul style="list-style-type: none"> White Mapei 103 Kerakoll 51 Pearl Mapei 110 Kerakoll 03 Grey Mapei 112 Kerakoll 04 Dark Mapei 113 Kerakoll 04 Metrowood Mapei 112 Kerakoll 04 	<p>Considering the characteristics of this serie we suggest:</p> <ul style="list-style-type: none"> 2 mm joint For the sizes 30x60 lined up laying or 3/4 staggered laying is suggested Grouting colour <ul style="list-style-type: none"> White Mapei 103 Kerakoll 51 Pearl Mapei 110 Kerakoll 03 Grey Mapei 112 Kerakoll 04 Dark Mapei 113 Kerakoll 04 Metrowood Mapei 112 Kerakoll 04 	<p>Im Hinblick auf die Eigenschaften der Serie es empfiehlt sich:</p> <ul style="list-style-type: none"> 2 mm. Fuge Für Formate 30x60 neben verlegt oder 3/4 versetzt Farbe der Fuge <ul style="list-style-type: none"> White Mapei 103 Kerakoll 51 Pearl Mapei 110 Kerakoll 03 Grey Mapei 112 Kerakoll 04 Dark Mapei 113 Kerakoll 04 Metrowood Mapei 112 Kerakoll 04 	<p>Vu les caractéristiques de la série, nous conseillons:</p> <ul style="list-style-type: none"> Joint 2 mm Pour les formats 30x60, il est conseillé une pose alignée ou une pose décalée au 3/4 Couleur de joint <ul style="list-style-type: none"> White Mapei 103 Kerakoll 51 Pearl Mapei 110 Kerakoll 03 Grey Mapei 112 Kerakoll 04 Dark Mapei 113 Kerakoll 04 Metrowood Mapei 112 Kerakoll 04 	<p>В силу характеристик данной серии рекомендуется:</p> <ul style="list-style-type: none"> Шов 2 мм Для форматов 30x60 рекомендуется укладка рядами или со смещением на 3/4 Цвет шов <ul style="list-style-type: none"> White Mapei 103 Kerakoll 51 Pearl Mapei 110 Kerakoll 03 Grey Mapei 112 Kerakoll 04 Dark Mapei 113 Kerakoll 04 Metrowood Mapei 112 Kerakoll 04
--	---	--	---	--

Certificazioni - Certifications - Zertifizierungen - Certifications - Сертификаты

<p>Static coefficient of friction ASTM test ASTM C1028 - 06</p> <p>Dry μ > 0,6 Wet μ > 0,6 Natural surface - Antislip</p>	<p>Dynamic coefficient of friction B.C.R. method D.M. 14 giugno 1989, n. 236</p> <p>μ > 0,40 Metrosigns</p>	<p>Dynamic coefficient of friction DCOF AcuTest® ANSI A137.1 - 2012</p> <p>Wet ≥ 0,42 Natural surface - Antislip</p>	
---	---	--	--

Simbologia - Symbols - Symbole - Symboles - Условные обозначения

<p>RET</p> <p> Rettificata</p> <p>Rectified</p> <p>Kalibriert</p> <p>Rectifié</p> <p>Ректифицированная</p>	<p>V2</p> <p>Piastrelle con lieve variazione di tono e disegno</p> <p>Tiles with slight shade and aspect variation</p> <p>Fliesen mit leicht unterschiedlichen Tonalitäten und Muster</p> <p>Carreaux avec faible différence de nuance et structure</p> <p>Плитка с легким изменением тона и рисунка</p>	<p></p> <p>Ingelivo</p> <p>Frost-resistant</p> <p>Frostsicher</p> <p>Résistance au gel</p> <p>Морозостойкая</p>	<p>5</p> <p>Gruppo di usura superficiale</p> <p>Surface abrasion group</p> <p>Abrieb</p> <p>Degré de usure superficielle</p> <p>Группа истираемости поверхности</p>	<p>R10 R11</p> <p>DIN 51130</p> <p>Classificazione antiscivolosità</p> <p>Antislip</p> <p>Rutschhemmungsklassifizierung</p> <p>Classification glissement</p> <p>Классификация устойчивости к скольжению</p>	<p>A+B</p> <p>DIN 51097</p> <p>Classificazione antiscivolosità</p> <p>Anti-slip</p> <p>Rutschhemmungsklassifizierung</p> <p>Classification glissement</p> <p>Классификация устойчивости к скольжению</p>	<p></p> <p>Spessore mm</p> <p>Thickness mm</p> <p>Dike mm.</p> <p>Epaisseur mm</p> <p>Толщина ММ</p>
<p>V4</p> <p>Piastrelle con variazione random di tono e disegno</p> <p>Tiles with random shade and aspect variation</p> <p>Fliesen mit zufällig unterschiedlichen Tonalitäten und Muster</p> <p>Carreaux avec différence aléatoire de nuance et structure</p> <p>Плитка со случайным изменением тона и рисунка</p>						

THANKSTO:
Zucchetti. Kos

ceramica
SANT'AGOSTINO

Via Statale, 247 - 44047 S. Agostino (FE) ITALY

T. +39 0532 844111

F. Italia + 39 0532 846113

F. Export + 39 0532 844209

info@ceramicasantagostino.it

www.ceramicasantagostino.it



#AgostinoLover