



E S E D R A

g r e s   f i n e   p o r c e l l a n a t o

★★★★★  
**NAXOS**<sup>®</sup>  
FINCIBEC GROUP



★★★★★  
**NAXOS**<sup>®</sup>  
FINCIBEC GROUP

# INDICE

index

02

CONCEPT

08

OLIMPIA

16

EFESO

22

PERGAMO

28

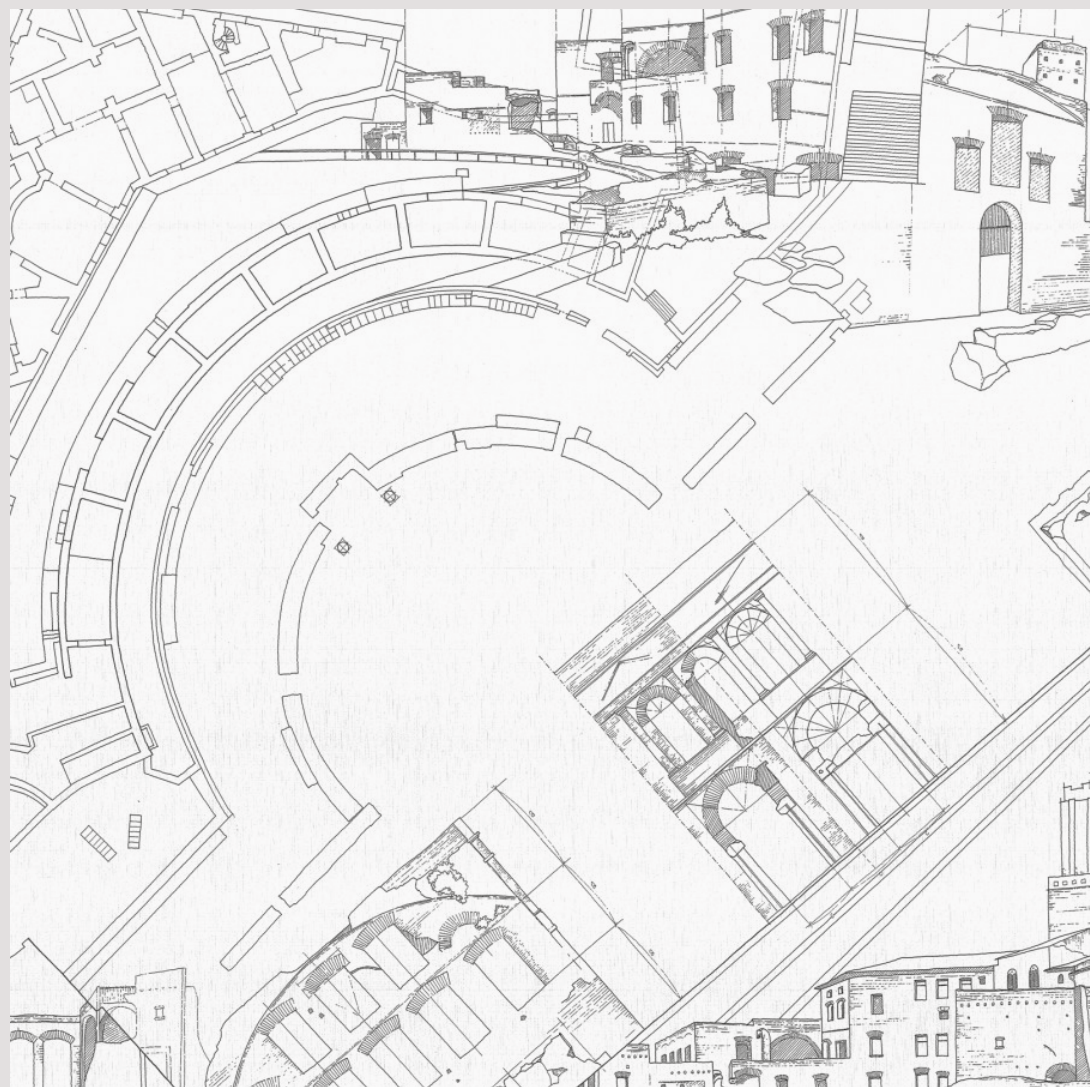
DELFI

34

ANDROS



E S E D R A



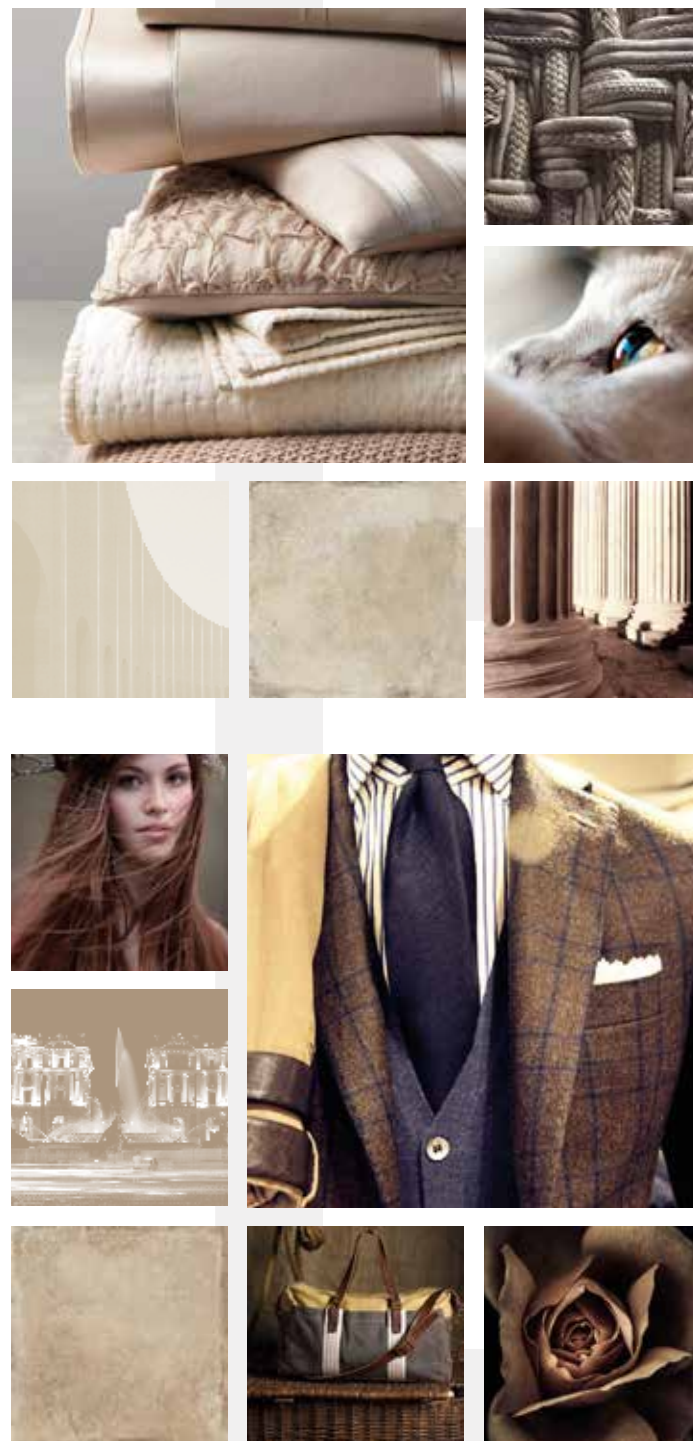
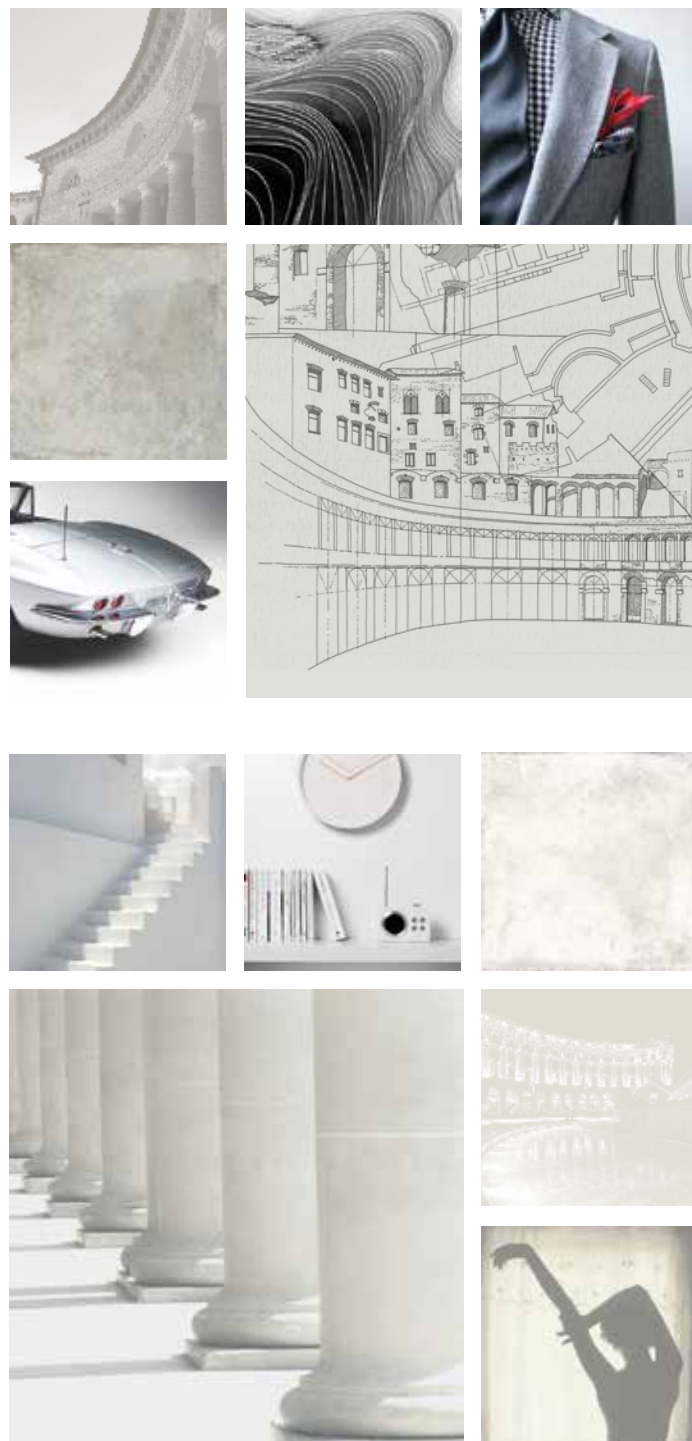
## MATERIA CHE HA UNA STORIA DA RACCONTARE

Material with a story to tell

Esedra è la materia d'incontro tra stili che superano il tempo. Il suo bordo è mosso da delicate sbrecciature pur mantenendo la regolarità geometrica della lastra. L'espressività della superficie si arricchisce di movimenti grafici decisi e garbati al tempo stesso, che interpretano in modo inedito le venature calcaree del travertino. Una materia dallo stile forte, pensata, con i suoi colori ispirati alla natura, per caratterizzare i luoghi del vivere contemporaneo.

Esedra is the material that juxtaposes styles transcending time. Its edges are textured with delicate discontinuities that nonetheless maintain the geometric regularity of the piece. The expressiveness of the surface is enriched with decisive yet subtle motifs that innovatively reinterpret the grain of travertine. A material with a vigorous style, conceived with naturally inspired colours to assert spaces for contemporary living.

ESEDRA



# CLASSICO E CONTEMPORANEO

Classical yet contemporary

**Esedra: una magia che rende il tempo percorribile in "entrambe le direzioni". Oggetti e concetti che segnano un'epoca ma hanno l'energia per tornare attuali in momenti successivi. La bellezza che riesce ad oltrepassare i limiti del tempo. Quella vera. Esedra è tutto questo: materia che recupera il sapore delle antiche lastre sbrecciate dalla mano dell'uomo, un fondamentale architettonico che ha dato vita e carattere a tante piazze medioevali che si rinnova in superfici di incredibile attualità.**

Esedra: a magic that allows time to be lived and enjoyed in both directions. Objects and concepts that trace a bygone era yet have the energy to bound back into the present. A beauty that manages to bypass the limits of time itself. The real definition of beauty. Esedra is all this: a material which reclaims the hand-chipped authenticity of yore, of the fundamental architecture that gave life and character to many a medieval square, yet which reinvents itself with stunningly contemporary timeliness.



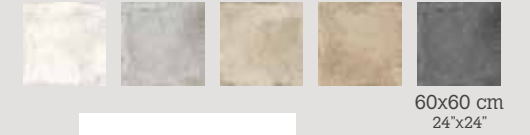


## SUPERFICIE NATURALE

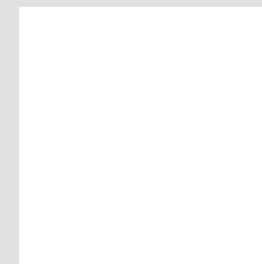
natural surface

1 BORDO NATURALE  
1 natural edge

5 COLORI  
5 colours



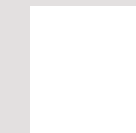
5 FORMATI  
5 sizes



60x60 cm  
24"x24"



30x60 cm  
12"x24"



30x30 cm  
12"x12"



7,3x30 cm  
3"x12"



50x100 cm  
20"x39"

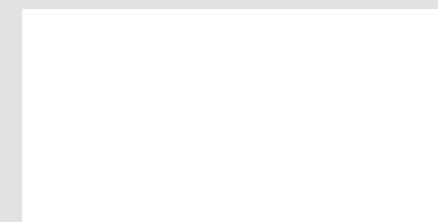
## SUPERFICIE GRIP

grip surface

1 BORDO NATURALE  
1 natural edge

1 FORMATO  
1 size

3 COLORI  
3 colours



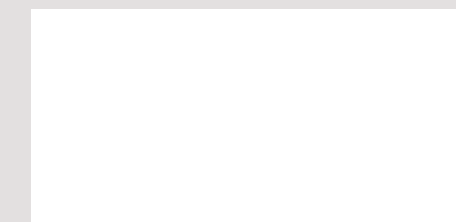
50x100 cm  
20"x39"

## 20 mm GRIP

2 BORDI NATURALE / RETT.  
2 edges natural / rect

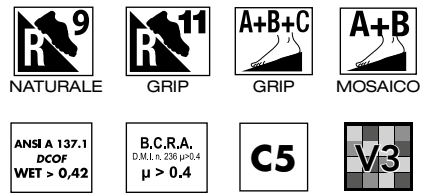
1 FORMATO  
1 size

2 COLORI  
2 colours



50x100 cm  
20"x39"



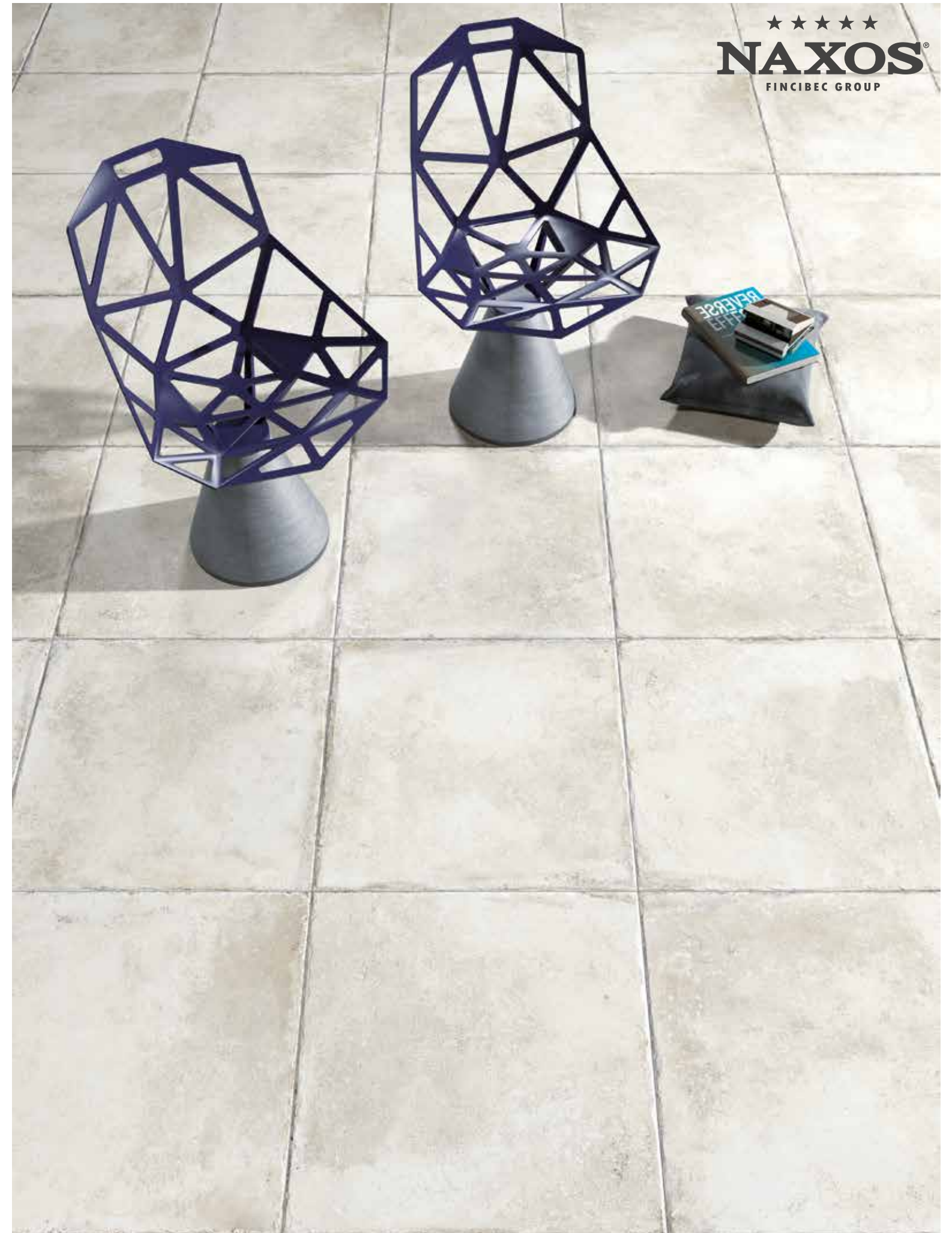


# OLIMPIA

gres fine porcellanato  
fine porcelain stoneware



★★★★★  
**NAXOS**<sup>®</sup>  
FINCIBEC GROUP

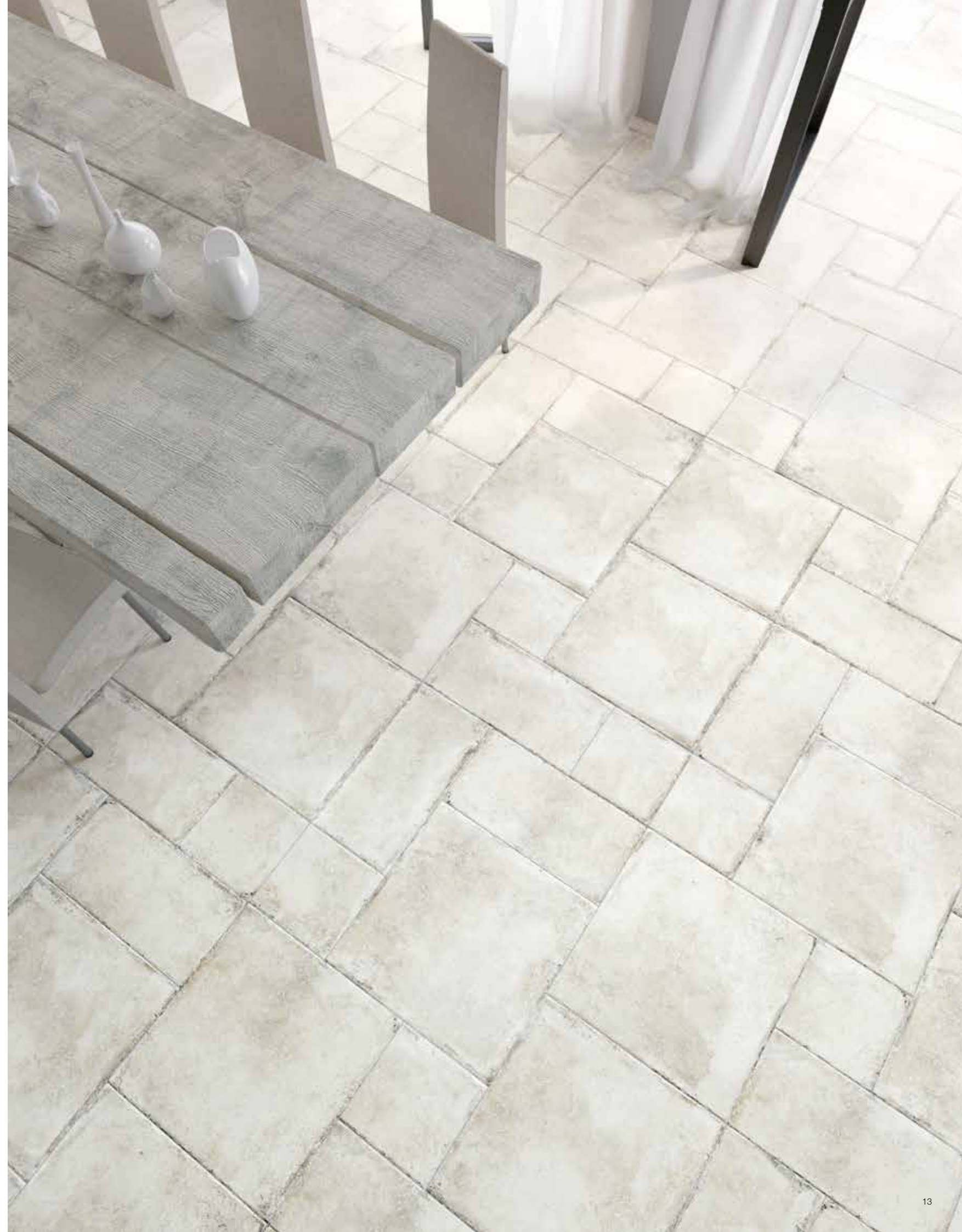






Ambiente realizzato con: Olimpia 60x60 nat. - 30x60 nat. - 30x30 nat. - 50x100 grip  
Setting realized with: Olimpia 60x60 nat. - 30x60 nat. - 30x30 nat. - 50x100 grip







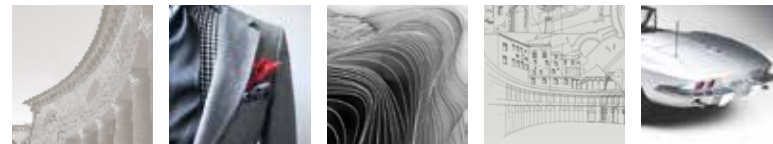
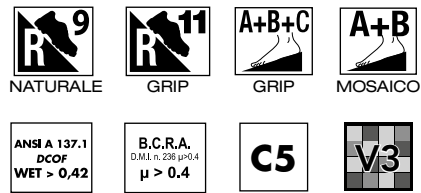
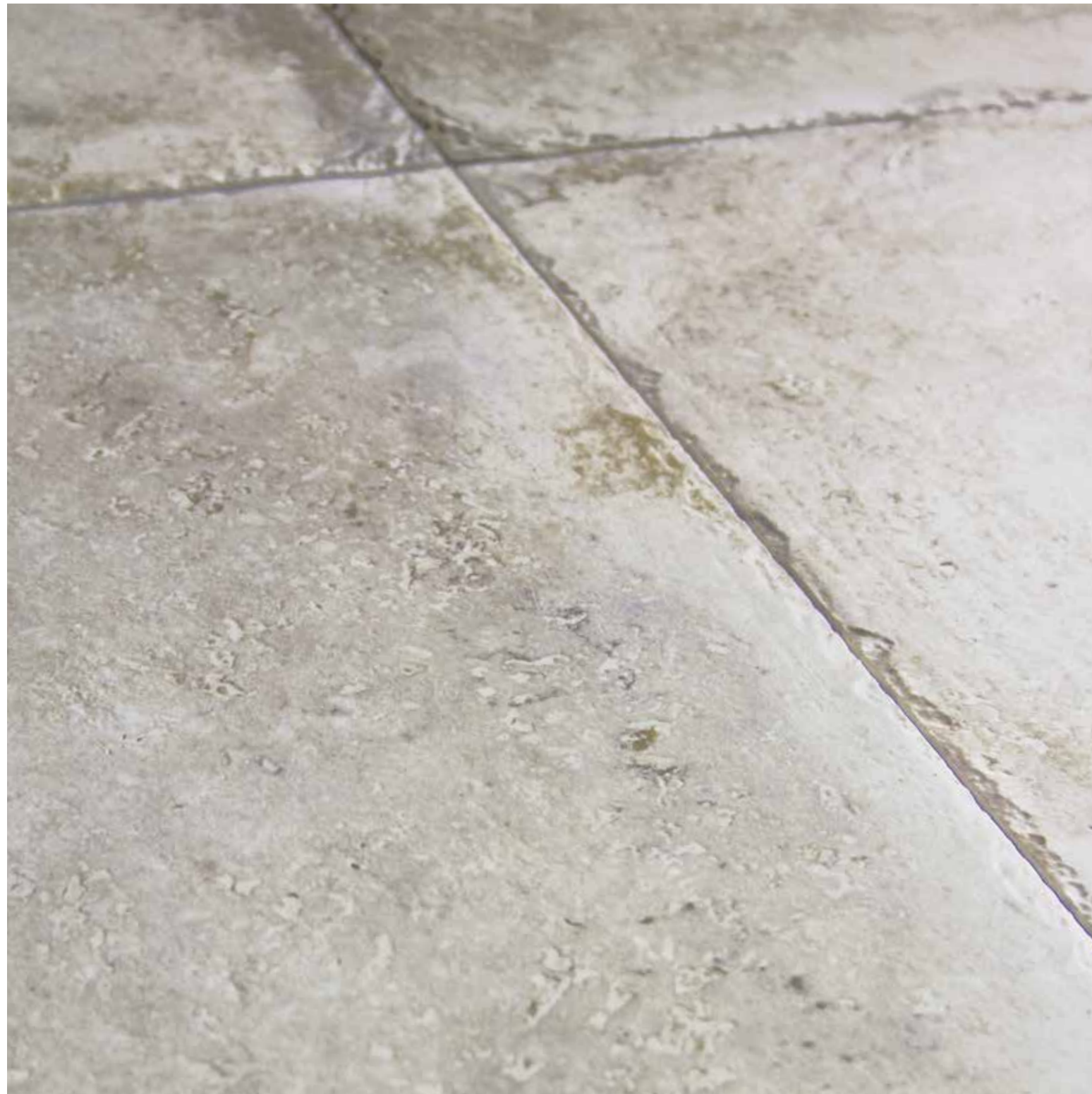


Ambiente realizzato con: Olimpia 50x100 grip  
Setting realized with: Olimpia 50x100 grip

OLIMPIA  
gres fine porcellanato  
fine porcelain stoneware







# EFESO

gres fine porcellanato  
fine porcelain stoneware







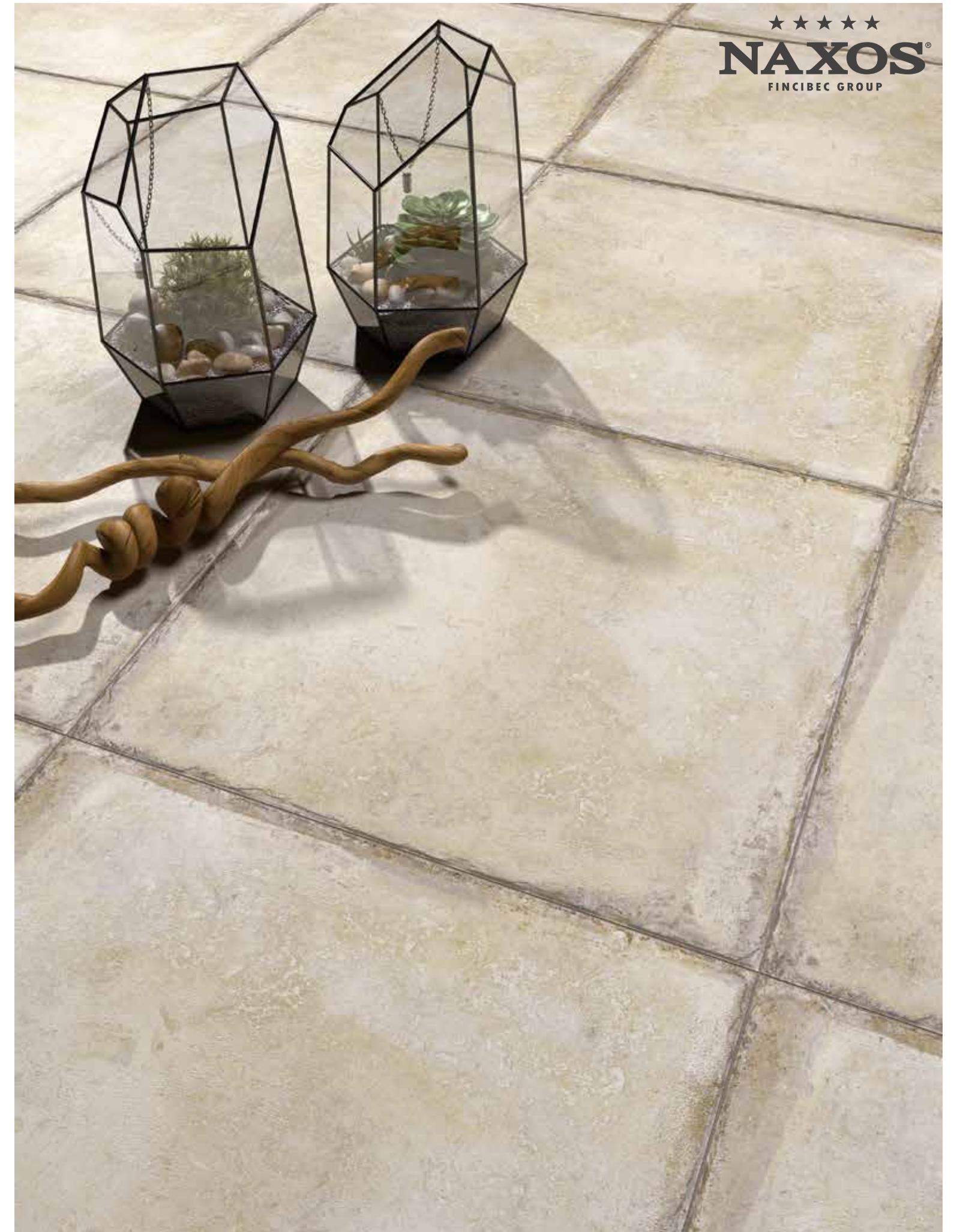
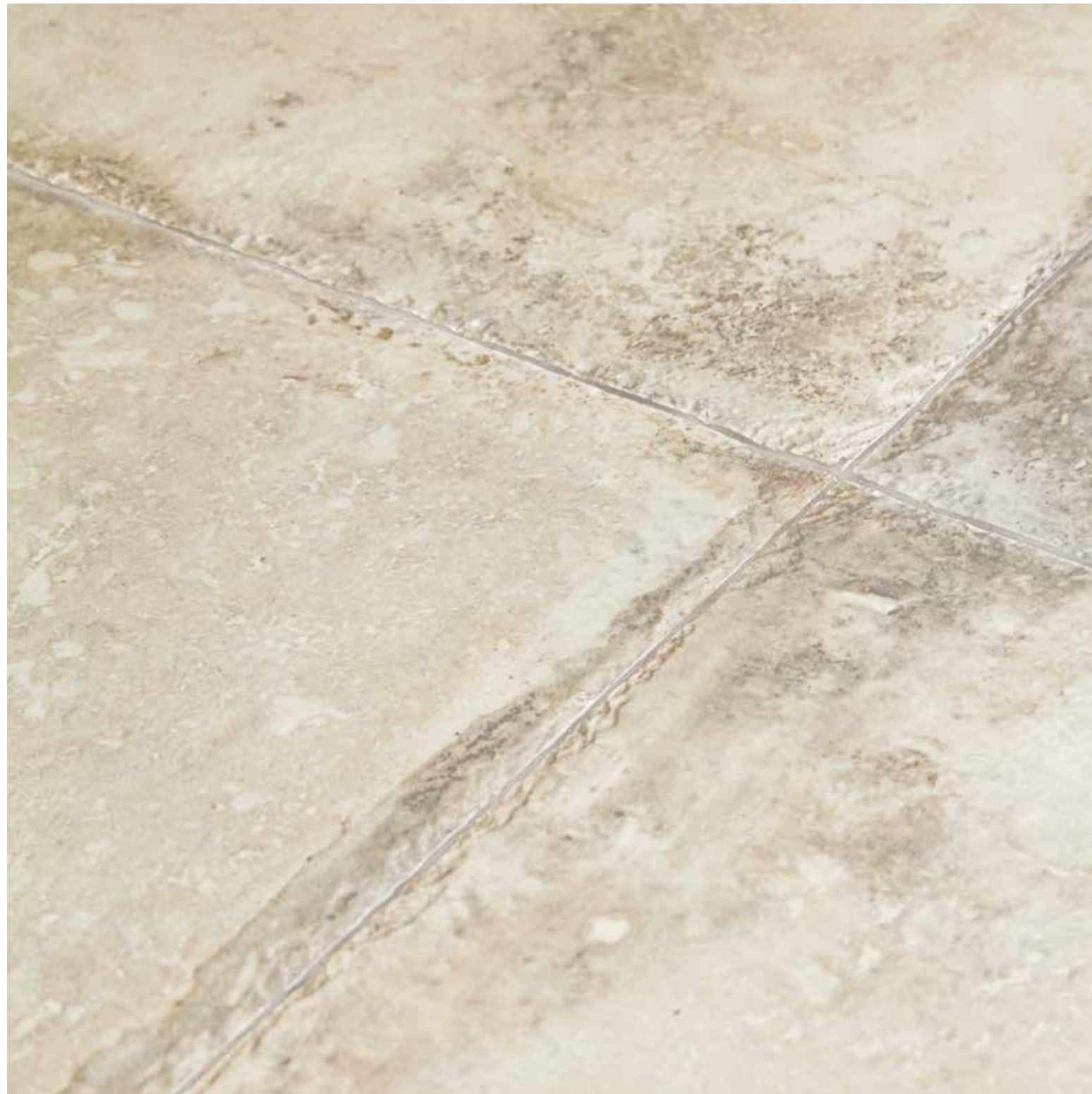


# EFESO

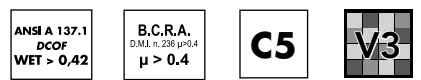
gres fine porcellanato  
fine porcelain stoneware







★★★★★  
**NAXOS**<sup>®</sup>  
 FINCIBEC GROUP



# PERGAMO

gres fine porcellanato  
 fine porcelain stoneware





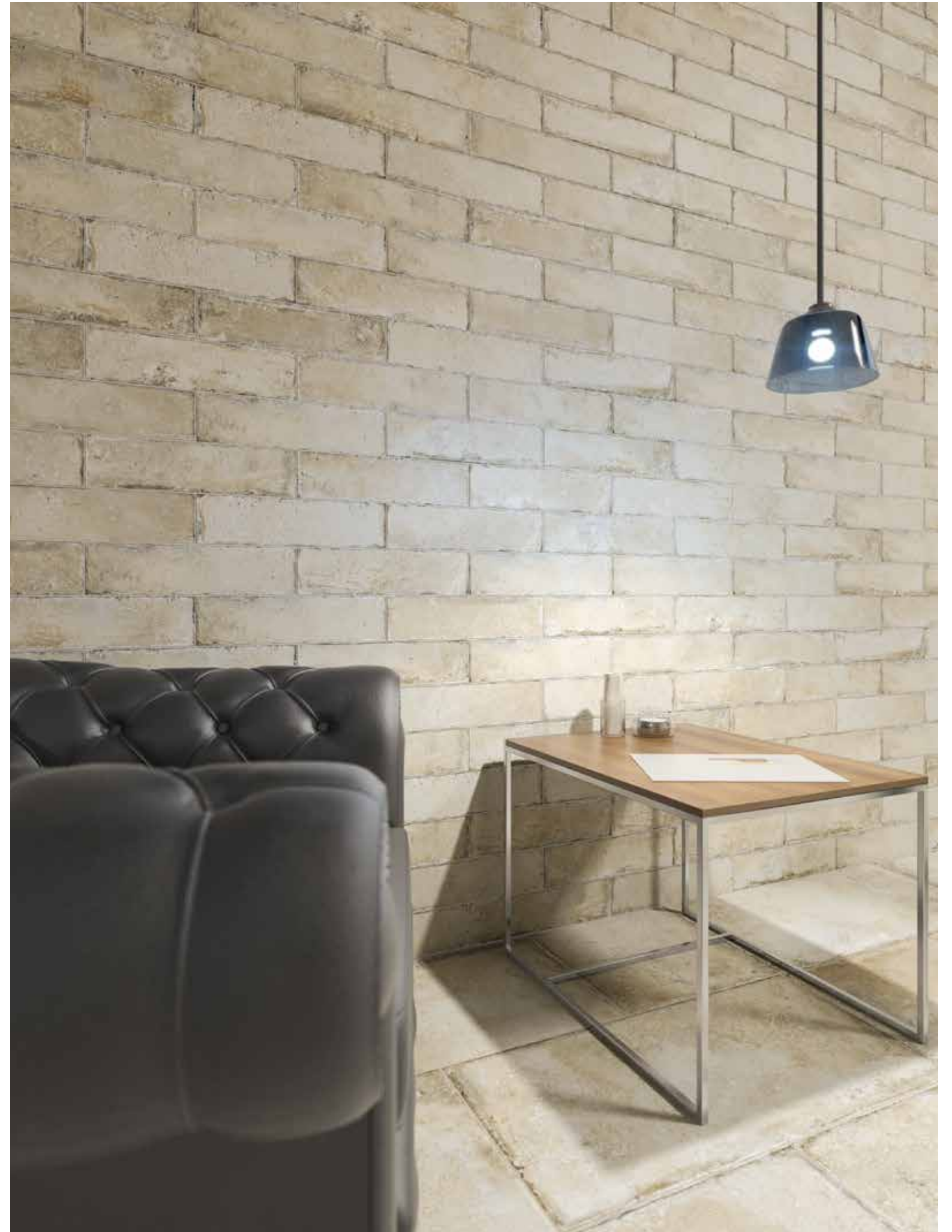




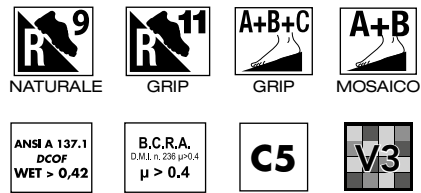


# PERGAMO

gres fine porcellanato  
fine porcelain stoneware

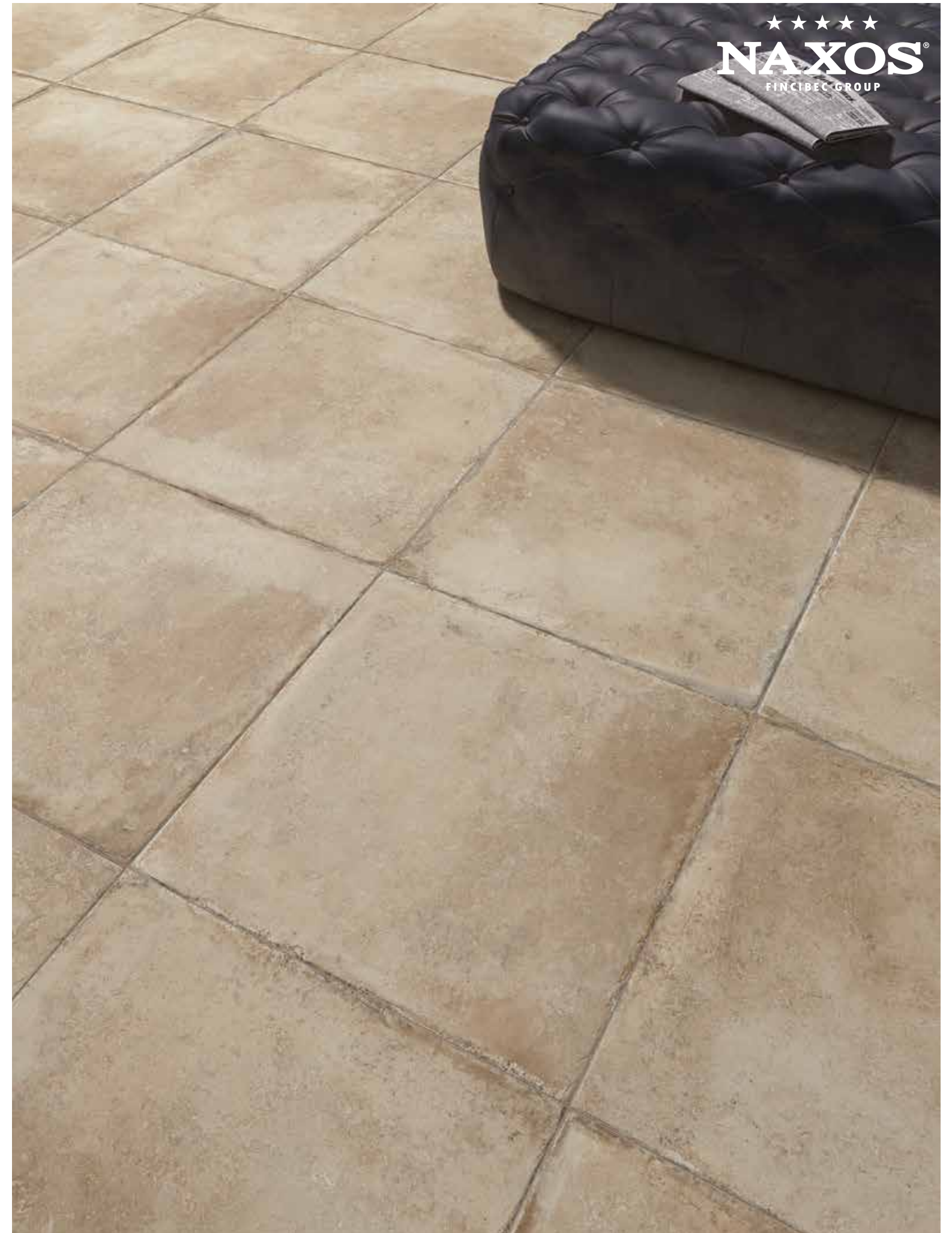






# DELFI

gres fine porcellanato  
fine porcelain stoneware



★★★★★  
**NAXOS**  
FINCIBEC GROUP









# DELFI

gres fine porcellanato  
fine porcelain stoneware







E S E D R A

gres fine porcellanato  
fine porcelain stoneware



EFESO

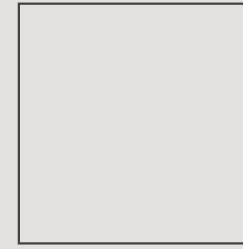
OLIMPIA

PERGAMO

DELFI

ANDROS

## Sizes - Formati



60x60 - 24"x24"  $\text{P} 9 \text{ mm}$

91512 Olimpia Nat.  
91513 Pergamo Nat.  
91514 Efeso Nat.  
91515 Delfi Nat.  
94786 Andros Nat.

■ 93



30x60 - 12"x24"  $\text{P} 9 \text{ mm}$

91508 Olimpia Nat.  
91509 Pergamo Nat.  
91510 Efeso Nat.  
91511 Delfi Nat.

■ 81



30x30 - 12"x12"  $\text{P} 9 \text{ mm}$

93030 Olimpia Nat.  
93032 Pergamo Nat.  
93029 Efeso Nat.  
93027 Delfi Nat.

■ 75



7,3x30 - 3"x12"  $\text{P} 9 \text{ mm}$   
Mattoncino

91804 Olimpia Nat.  
91805 Pergamo Nat.  
91806 Efeso Nat.  
91807 Delfi Nat.

■ 166



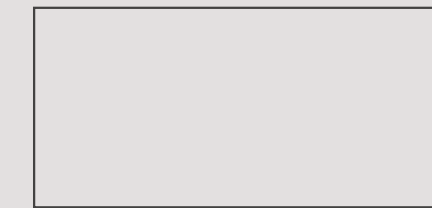
50x100 - 10"x39"  $\text{P} 9 \text{ mm}$

94666 Olimpia Nat. 91886 Olimpia Grip  
94667 Pergamo Nat. 91887 Pergamo Grip  
94665 Efeso Nat. 91888 Efeso Grip

■ 129

■ 129

20 mm



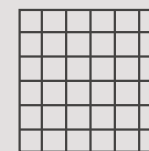
50x100 - 10"x39"  $\text{P} 20 \text{ mm}$

102001 Efeso Grip Rett. 102003 Efeso Grip  
102000 Pergamo Grip Rett. 102002 Pergamo Grip

■ 165

■ 140

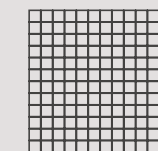
## Mosaics - Mosaici



4,7x4,7 - 1,8"x1,8"  
Mosaico su rete  
burattato  
30x30 - 12"x12"

91701 Olimpia Nat.  
91702 Pergamo Nat.  
91700 Efeso Nat.  
91699 Delfi Nat.

■ 193



2,5x2,5 - 1"x1"  
Mosaico su rete  
burattato  
30x30 - 12"x12"

95649 Olimpia Nat.  
95650 Pergamo Nat.  
95651 Efeso Nat.  
95652 Delfi Nat.

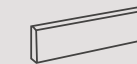
■ 202

## Special pieces - Pezzi speciali



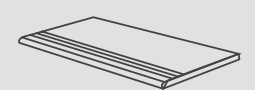
7,2x60 - 3"x24"  $\text{P} 9 \text{ mm}$   
Battiscopa  
naturale

● 13



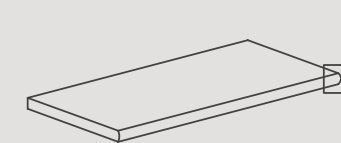
7,2x30 - 3"x12"  $\text{P} 9 \text{ mm}$   
Battiscopa  
naturale

● 5



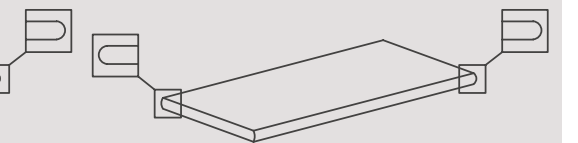
30x60 - 12"x24"  $\text{P} 9 \text{ mm}$   
Gradino  
naturale

● 64



50x100 - 10"x39"  $\text{P} 20 \text{ mm}$   
Gradone con Toro

Grip ● 198  
Grip Rett. ● 202



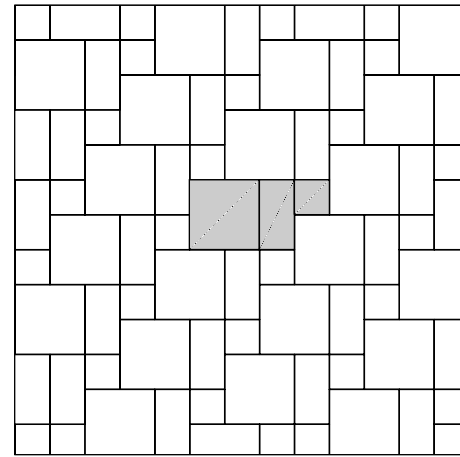
50x100 - 10"x39"  $\text{P} 20 \text{ mm}$   
Gradone Angolare con Toro DX/SX

Grip ● 212  
Grip Rett. ● 213

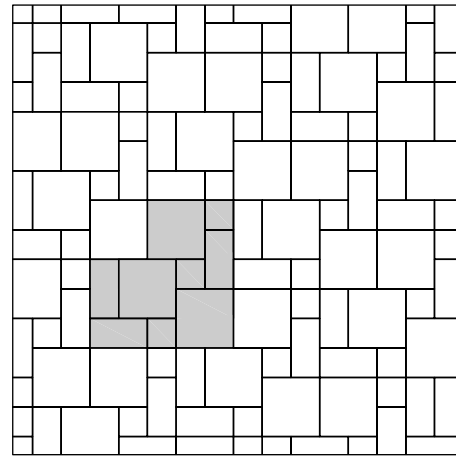
Tutte le richieste pezzi speciali Pools&Wellness, possono essere inoltrate a: [engineering@fincibec.it](mailto:engineering@fincibec.it)  
For Pools&Wellness special pieces, all requests may be forwarded to: [engineering@fincibec.it](mailto:engineering@fincibec.it)



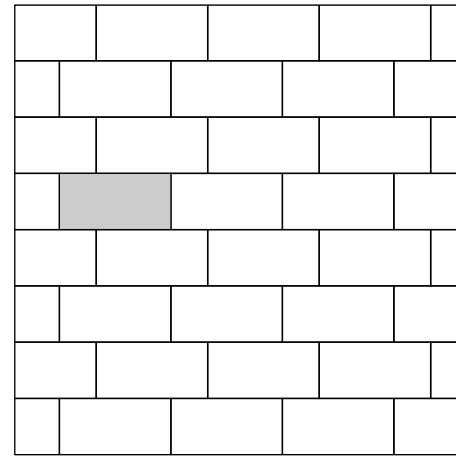
## How to lay - Schemi di posa



60x60	57,1%
30x60	28,6%
30x30	14,3%

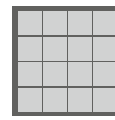


60x60	57,1%
30x60	28,6%
30x30	14,3%

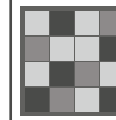


50x100	100%
--------	------

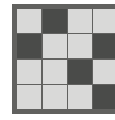
## Colours variations - Variazioni cromatiche



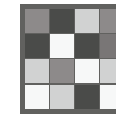
**V1**  
Even appearance  
Aspetto uniforme



**V3**  
Medium variation  
Media variazione



**V2**  
Light variation  
Lieve variazione



**V4**  
Strong variation  
Intensa variazione

It is necessary to take the tiles from several different boxes when laying them.

È indispensabile all'atto della posa, prelevare le piastrelle da più confezioni.

## Use categories - Categorie d'impiego

**C1**

Floor tiles recommended for low traffic areas.  
Piastrille da pavimento consigliate per calpestio lieve.

**C4**

Floor tiles recommended for medium traffic areas.  
Piastrille da pavimento consigliate per calpestio medio.

**C2**

Floor tiles recommended for light traffic areas.  
Piastrille da pavimento consigliate per calpestio leggero.

**C5**

Floor tiles recommended for heavy uses.  
Piastrille da pavimento consigliate per calpestio intenso.

**C3**

Floor tiles recommended for medium-light traffic areas.  
Piastrille da pavimento consigliate per calpestio medio-leggero.

## Packaging - Imballi

	60x60 cm 24"x24"	50x100 cm 10"x39"	50x100 cm 20 mm 10"x39"	30x60 cm 12"x24"	30x30 12"x12"	30x30 cm Mosaico 12"x12" Mosaic	7,3x30 cm Mattoncino 3"x12"
Pc.	3	2	1	6	13	11	46
M <sup>2</sup>	1,08	1	0,5	1,08	1,17	1	1,007
Kg	23	21	22,5	22,50	24	20,3	20,5

	60x60 cm 24"x24"	50x100 cm 10"x39"	50x100 cm 20 mm 10"x39"	30x60 cm 12"x24"	30x30 12"x12"	30x30 cm Mosaico 12"x12" Mosaic	7,3x30 cm Mattoncino 3"x12"
Colli/Boxes	40	35	42	48	36	50	60
M <sup>2</sup>	43,2	35	21	51,84	36	58,5	60,42
Kg	920	735	945	1080	730,8	1200	1230

## CARATTERISTICHE TECNICHE / GRES FINE PORCELLANATO

TECHNICAL SPECIFICATIONS / PORCELAIN STONEWARE - TECHNISCHE EIGENSCHAFTEN / FEINSTEINZEUG - CARACTÉRISTIQUES TECHNIQUES / GRÈS FIN CÉRAME CARACTERÍSTICAS TÉCNICAS / GRES FINO PORCELÁNICO - ТЕХНИЧЕСКИЕ ХАРАКТЕРИСТИКИ / МЕЛКОЗЕРНИСТЫЙ КЕРАМОГАНИТ

STANDARDS : UNI EN 14411 ANNEX G - Bla / UNI EN ISO 13006 ANNEX G - Bla

CARATTERISTICHE TECNICHE TECHNICAL DATA TECHNISCHE DATEN CARACTÉRISTIQUES TECHNIQUES CARACTERÍSTICAS TÉCNICAS ТЕХНИЧЕСКИЕ ХАРАКТЕРИСТИКИ		TIPO DI PROVA STANDARD OF TEST NORME DU TEST TESTNORM TIPO DE PRUEBA ТИП ТЕСТА	VALORI PRESCRITTI DALLE NORME INTERNATIONAL STANDARDS INTERNATIONALE NORMEN VALEURS PRÉVUES PAR LES NORMES VALORES PREVISTOS POR LAS NORMAS ПРЕДПОЛОЖЕННЫЕ СТАНДАРТОМ	VALORE MEDIO/AVG NOMOS/AVERAGE/VALLE NOMOS/AVÉRE/VALLE VALEURS MOYEN/AVG VALORES MEDIO/AVG СРЕДНЕЕ ЗНАЧЕНИЕ/AVG	
CARATTERISTICHE DIMENSIONALI - SIZE CHARACTERISTICS - MASSEIGENSCHAFTEN - DETERMINATION DES CARACTÉRISTIQUES DIMENSIONNELLES CARACTERÍSTICAS DIMENSIONALES - РАЗМЕРНЫЕ ХАРАКТЕРИСТИКИ			REQUIREMENTS FOR NOMINAL SIZE		
			7 cm ≤ N < 15 cm	N ≥ 15 cm	
			mm	%	mm
LATI SIDES - SEITEN COTES - CANTOS РАЗМЕРЫ СТОРОН		FOR NON-RECTIFIED TILES	±0,9	±0,6	±2,0
		FOR RECTIFIED TILES	±0,4	±0,3	±1,0
SPESSORE THICKNESS - DICKE ÉPAISSEUR - ESPESOR ТОЛЩИНА			±0,5	±5,0	±0,5
RETTILINEITÀ DEGLI SPIGOLI STRAIGHTNESS OF SIDES - GERADLINIGKEIT DER KANTEN/RECTITUDE DES ARÊTES - RECTITUD DE LOS CANTOS - КООРДИНАТНОСТЬ		FOR NON-RECTIFIED TILES	±0,8	±0,5	±1,5
		FOR RECTIFIED TILES	±0,4	±0,3	±0,8
ORTOGONALITÀ RECTANGULARITY - RECHTWINKLIGKEIT PERPENDICULARITÉ - ORTOGONALIDAD КРЯВИЗНА СТОРОН		FOR NON-RECTIFIED TILES	±0,8	±0,5	±2,0
		FOR RECTIFIED TILES	±0,4	±0,3	±1,5
PLANARITÀ SURFACE FLATNESS - EBENFLÄCHIGKEIT PLANEITÉ DE SURFACE - PLANEIDAD КРЯВИЗНА ПОВЕРХНОСТИ		CENTRE CURVATURE	FOR NON-RECTIFIED TILES	±0,8	±0,5
		FOR RECTIFIED TILES	±0,6	±0,4	±1,8
		EDGE CURVATURE	FOR NON-RECTIFIED TILES	±0,8	±0,5
		FOR RECTIFIED TILES	±0,6	±0,4	±1,8
		WARPAGE	FOR NON-RECTIFIED TILES	±0,8	±0,5
		FOR RECTIFIED TILES	±0,6	±0,4	±1,8
ASSORBIMENTO D'ACQUA WATER ABSORPTION - WASSERAUFNAHME ABSORPTION D'EAU - ABSORCIÓN DE AGUA ВОДОПОГЛОЩЕНИЕ			EN ISO 10545-3	≤0,5%	≤0,1%
RESISTENZA ALLA FLESSIONE FLEXION RESISTANCE - BIEGEFESTIGKEIT RESISTENCIA A LA FLEXIÓN - RESISTENCIA A LA FLEXIÓN ПРЕДЕЛ ПРОЧНОСТИ ПРИ ИЗГИБЕ			EN ISO 10545-4	S ≥ 700 N $\bar{f}$ < 7,5 mm S ≥ 1.300 N $\bar{f}$ ≥ 7,5 mm R ≥ 35 N/mm	CONFORME COMPLYING - ERFÜLLT CONFORME - CONFORME ООТВЕТСТВУЕТ
RESISTENZA ALL'URTO IMPACT RESISTANCE - STOSSEFESTIGKEIT RESISTENCIA AUX CHOCOS - RESISTENCIA A LOS GOLPES УДАРНОСТОЙКОСТЬ			EN ISO 10545-5	VALORE DICHIARATO DECLARED VALUE - ANGEGBENER WERT VALEUR DÉCLARÉE - VALOR DECLARADO - ЗАЯВЛЕННОЕ ЗНАЧЕНИЕ	> 0,80
COEFFICIENTE DI DILATAZIONE TERMICA LINEARE COEFFICIENT OF LINEAR THERMAL EXPANSION - LINEARER WÄRMEAUDEHNUNGSKOEFFIZIENT COEFFICIENT DE DILATION THERMIQUE LINEAIRE - COEFFICIENTE DE DILATACION TÉRMICA LINEAL КОЭФИЦИЕНТ ЛИНЕЙНОГО ТЕРМИЧЕСКОГО РАСТЯЖЕНИЯ			EN ISO 10545-8	VALORE DICHIARATO DECLARED VALUE - ANGEGBENER WERT VALEUR DÉCLARÉE - VALOR DECLARADO - ЗАЯВЛЕННОЕ ЗНАЧЕНИЕ	α = 6,7 x 10 <sup>-6</sup> / °C
RESISTENZA AGLI SBALZI TERMICI RESISTANCE TO THERMAL SHOCKS - BESTÄNDIGKEIT GEGEN TEMPERATURSCHWANKUNGEN RESISTENCIA AUX CHOCOS THERMIQUES - RESISTENCIA A LOS CHOCOS TÈRMICOS СТОЙКОСТЬ К ПЕРЕПАДАМ ТЕМПЕРАТУРЫ			EN ISO 10545-9	TEST SUPERATO SECONDO EN ISO 10545-1 TEST PASSED ACCORDING TO - TEST BESTANDEN NACH TEXTE DÉPASSÉ SELON - PRUEBA SUPERADA SEGÚN ИСПЫТАНИЕ ПРОЙДЕНО В СООТВЕТСТВИИ С	NESSUN DANNO NO DAMAGE - KEIN SCHADEN AUCUN DOMMAGE -NINGUN DAÑO БЕЗ ПОВРЕЖДЕНИЙ
DILATAZIONE ALL'UMIDITÀ (IN MMM) MOISTURE EXPANSION (IN MMM) - FEUCHTIGKEITSBEDINGTE AUSDEHNUNG (IN MMM) DILATACION A LA HUMIDITE (EN MMM) - DILATACION CON LA HUMEDAD (EN MMM) ВЛАЖНОСТНОЕ РАСТЯЖЕНИЕ (В MMM)			EN ISO 10545-10	VALORE DICHIARATO DECLARED VALUE - ANGEGBENER WERT VALEUR DÉCLARÉE - VALOR DECLARADO - ЗАЯВЛЕННОЕ ЗНАЧЕНИЕ	MAX 0,1 mm / m
RESISTENZA AL GELO FROST RESISTANCE - FROSTBESTÄNDIGKEIT RESISTENCIA AU GEL - RESISTENCIA AL HIELO МОРОЗОСТОЙКОСТЬ			EN ISO 10545-12	TEST SUPERATO SECONDO EN ISO 10545-1 TEST PASSED ACCORDING TO - TEST BESTANDEN NACH TEXTE DÉPASSÉ SELON - PRUEBA SUPERADA SEGÚN ИСПЫТАНИЕ ПРОЙДЕНО В СООТВЕТСТВИИ С	NESSUN DANNO NO DAMAGE - KEIN SCHADEN AUCUN DOMMAGE -NINGUN DAÑO БЕЗ ПОВРЕЖДЕНИЙ
RESISTENZA AI PRODOTTI CHIMICI USO DOMESTICO E ADDITIVI PER PISCINA RESISTANCE TO HOUSEHOLD AND SWIMMING POOL CHEMICAL PRODUCTS - BESTÄNDIGKEIT GEGEN HAUSHALTS-REARAGEN UND ZUSATZSTOFFE FÜR SWIMMINGPOOLS - RESISTENCIA A LOS PRODUCTOS QUIMICOS DE USO DOMESTICO Y ADITIVOS PARA PISCINA - СТОЙКОСТЬ К ДЕЙСТВИЮ БЫТОВЫХ ХИМИЧЕСКИХ СРЕДСТВ, ДОБАВОК В БАССЕЙНЫ			EN ISO 10545-13	B MIN	CONFORME COMPLYING - ERFÜLLT CONFORME - CONFORME ООТВЕТСТВУЕТ
RESISTENZA A BASSE CONCENTRAZIONI DI ACIDI E ALCALI RESISTANCE TO LOW CONCENTRATIONS OF ACIDS AND ALKALI - BESTÄNDIGKEIT BEI NIEDRIGEN KONZENTRATIONEN VON SÄUREN UND LAUGEN - RESISTENCIA A BAJAS CONCENTRACIONES D'ACIDES ET ALCALIS - RESISTENCIA A BAJAS CONCENTRACIONES DE ÁCIDOS Y ALCALIS - СТОЙКОСТЬ К ДЕЙСТВИЮ НИЗКИХ КОНЦЕНТРАЦИЙ КИСЛОТ И ЩЕЛОЧЕЙ			EN ISO 10545-13	VALORE DICHIARATO DECLARED VALUE - ANGEGBENER WERT VALEUR DÉCLARÉE - VALOR DECLARADO - ЗАЯВЛЕННОЕ ЗНАЧЕНИЕ	CONFORME COMPLYING - ERFÜLLT CONFORME - CONFORME ООТВЕТСТВУЕТ
RESISTENZA AD ALTE CONCENTRAZIONI DI ACIDI E ALCALI RESISTANCE TO HIGH CONCENTRATIONS OF ACIDS AND ALKALI - BESTÄNDIGKEIT BEI HOHEN KONZENTRATIONEN VON SÄUREN UND LAUGEN - RESISTENCIA A ALTAS CONCENTRACIONES D'ACIDES ET ALCALIS - RESISTENCIA A ALTAS CONCENTRACIONES DE ÁCIDOS Y ALCALIS - СТОЙКОСТЬ К ДЕЙСТВИЮ ВЫСОКИХ КОНЦЕНТРАЦИЙ КИСЛОТ И ЩЕЛОЧЕЙ			EN ISO 10545-13	VALORE DICHIARATO DECLARED VALUE - ANGEGBENER WERT VALEUR DÉCLARÉE - VALOR DECLARADO - ЗАЯВЛЕННОЕ ЗНАЧЕНИЕ	CONFORME COMPLYING - ERFÜLLT CONFORME - CONFORME ООТВЕТСТВУЕТ
RESISTENZA ALLE MACCHIE RESISTANCE TO STAINS - FLECKENBESTÄNDIGKEIT RESISTENCIA AUX TACHES - RESISTENCIA A LAS MANCHAS УСТОЙЧИВОСТЬ К ПЯТНООБРАЗОВАНИЮ			EN ISO 10545-14	CLASSE 3 MIN	CONFORME COMPLYING - ERFÜLLT CONFORME - CONFORME ООТВЕТСТВУЕТ
CESSIONE DI PIOMBO E CADMIO LEAD AND CADMIUM DISCHARGE - ABGABE VON BLEI UND CADMIUM PERTE DE PLOMB ET CADMIUM - CESION DE PLOMO Y CADMIO ВЫДЕЛЕНИЕ СВИНЦА И КАДМИЯ			EN ISO 10545-15	VALORE DICHIARATO DECLARED VALUE - ANGEGBENER WERT VALEUR DÉCLARÉE - VALOR DECLARADO - ЗАЯВЛЕННОЕ ЗНАЧЕНИЕ	< LIMITE DI RILEVAMENTO < THAN INSTRUMENT LIMIT - < LIMESSBARES WERT < LIMITE DE L'INSTRUMENT < LIMITE DEL INSTRUMENTO < НА ПРЕДЕЛЕ ОПРЕДЕЛИМОСТИ
SCIVOLOSITÀ SKID RESISTANCE - RUTSCHWERT GLISSANCE - ADHERENCIA СКОЛЬЗКОСТЬ			DM 236/89 BCRA ANSI A 137.1 DIN 51130 DIN 51097	> 0,40 WET DCOF > 0,42 -	> 0,40 > 0,42 R9 R11 A+B MOSAICO A+B+C

PER I CERTIFICATI SPECIFICI E VALORI PUNTI/VALI CONTATTARE FINBEC SPA - FOR SPECIFIC CERTIFICATES AND DATA, CONTACT FINBEC SPA - FÜR SPEZIELLE ZERTIFIKATE UND PUNKTWERT, FINBEC SPA, KONTAKTIEREN - POUR LES CERTIFICATS SPÉCIFIQUES ET LES VALEURS PONCTUELLES, CONTACTER FINBEC SPA - PARA LOS CERTIFICADOS ESPECÍFICOS Y LOS VALORES CONCRETOS, CONTACTE CON FINBEC SPA - ДО ПОРТОКА С ПЕЧАТНЫМИ СЕРТИФИКАТАМИ И ПОКАЗАТЕЛЯМИ ОБРАТИТЕСЬ К ФИНБЕК СПА

Escluso pezzi speciali ed elementi decorativi With the exception of special pieces and decors

### Note Notes

I prodotti possono essere modificati da Fincibec senza preavviso, respingendo ogni responsabilità su possibili danni diretti o indiretti causati da potenziali modifiche. Fincibec reserves the right to modify its products without prior notice and cannot be held liable for direct or indirect damage caused by such modifications.

Verificare sempre la correttezza delle informazioni e dei dati relativi a codici, imballaggi e pesi, consultando il listino prezzi in vigore. Always refer to the price list in force to ensure correct information and data on codes, packaging, and weight.

Le tonalità dei colori riportate nel catalogo sono indicative. The colours shades, reported on the catalogue, are indicative.





**NAXOS**

Strada Statale 569, 169  
41014 - Solignano (Mo) Italy

Tel. +39 059 748811  
Fax +39 059 797376

info@naxos-ceramica.it  
www.naxos-ceramica.it

**FINCIBEC S.p.A.**

Sede legale: Via Valle d'Aosta, 47  
41049 Sassuolo (Mo) Italy  
Gruppo Fire S.R.L.

**FINCIBEC USA INC.**

420 Columbus Avenue  
Valhalla N.Y. 10595 USA  
info@fincibecusa.com

