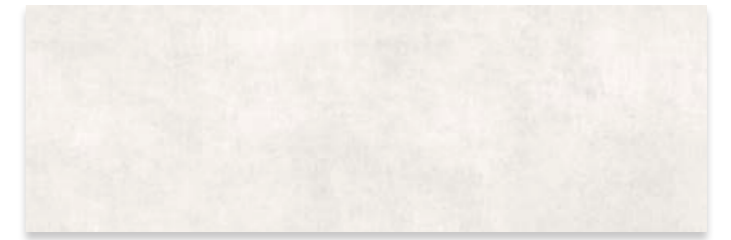


AT ALPHA



● At. Alpha Marfil 30x90 M19 002.872.0033.05202 



● At. Alpha Blanco 30x90 M19 002.872.0012.05202 



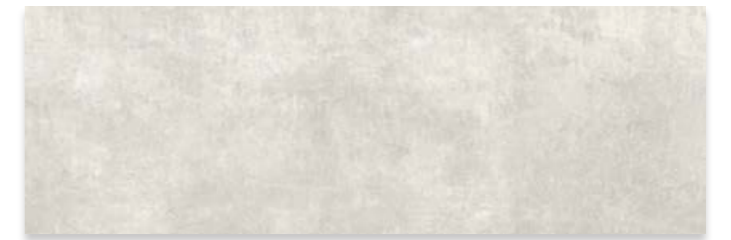
● At. Dec. Alpha Beige 30x90 M19 002.872.0007.09847  



● At. Dec. Alpha Gris 30x90 M19 002.872.0002.09847  



● At. Alpha Taupe 30x90 M19 002.872.0285.05202 



● At. Alpha Ceniza 30x90 M19 002.872.0019.05202 

PASTA ROJA
 REVESTIMIENTO PASTA ROJA
 RED BODY WALL TILES
 REVÊTEMENT PÂTE ROUGE



Formatos / Sizes / Formats

30x90
 11,81"x35,43"

Empaquetado / Packaging / Emballage

Formato	pz/cj	m ² /cj	cj/pl	m ² /pl	kg/cj	kg/pl
30x90	6	1.62	48	77.76	28.80	1.402.40



Formatos / Sizes / Format

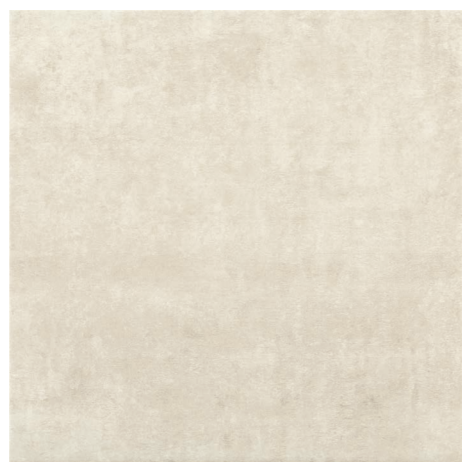
45x45
17,71"x17,71"



● At. Alpha Blanco 45x45 M06 001.302.0012.05202 PEI 4



● At. Dec. Alpha Gris 45x45 M06 001.302.0002.09847



● At. Alpha Marfil 45x45 M06 001.302.0033.05202 PEI 4



● At. Dec. Alpha Beige 45x45 M06 001.302.0007.09847



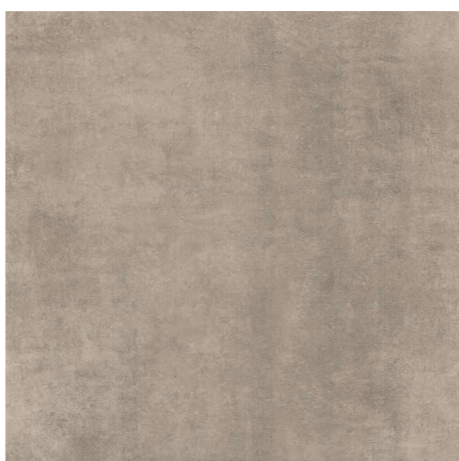
Wtd. / Wall / Rvtn.: At. Alpha Ceniza 25x70 - At. Dec. Alpha Gris 45x45
Pvto. / Floor / Sol: At. Alpha Ceniza 45x45 - At. Dec. Alpha Gris 45x45



● At. Alpha Ceniza 45x45 M06 001.302.0019.05202 PEI 4



● At. Dec. Alpha Perla 45x45 M06 001.302.0037.09847



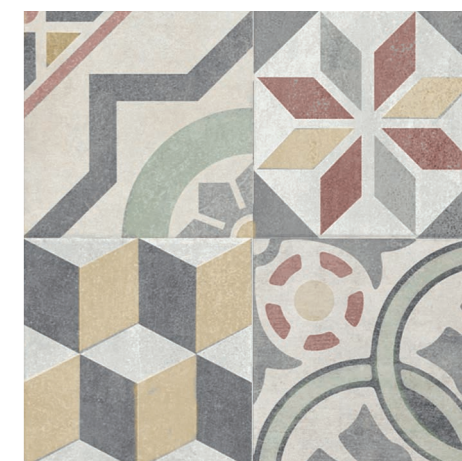
● At. Alpha Taupe 45x45 M06 001.302.0285.05202 PEI 4



● At. Dec. Alpha Marron 45x45 M06 001.302.0009.09847



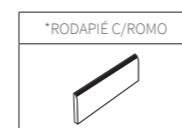
● At. Alpha Marengo 45x45 M06 001.302.0028.05202 PEI 4



● At. Dec. Alpha Mix 45x45 M06 001.302.0100.09847

Piezas especiales / Special pieces / Pièces especiales (No Dec.)

Consultar en página / Consult on page / Consulter en page: 366



Revestimiento Coordinado / Coordinated Wall Tile / Revêtement Coordiné:
At. Alpha 25x70 - Revestimiento pasta roja / Red body wall tiles / Revêtement pâte rouge - Pág / Page / Page 262

Empaquetado / Packaging / Emballage

Formato	pz/cj	m ² /cj	cj/pl	m ² /pl	kg/cj	kg/pl
45x45	7	1.42	52	73.84	25.95	1,369.4



Formatos / Sizes / Formats

25x70
13,11"x21,65"



● At. Alpha Blanco 25x70 M10 002.185.0012.05202



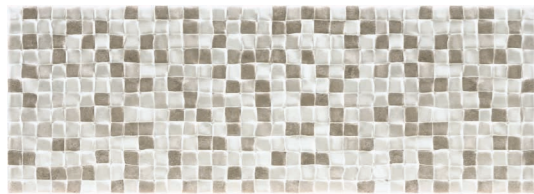
● At. Alpha Ceniza 25x70 M10 002.185.0019.05202



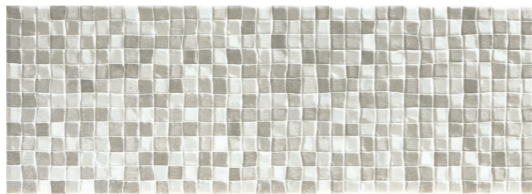
● At. Alpha Taupe 25x70 M10 002.185.0285.05202



● At. Alpha Marengo 25x70 M10 002.185.0028.05202



● At. Alpha Cubic Taupe 25x70 M10 002.185.0285.05207



● At. Alpha Cubic Marengo 25x70 M10 002.185.0028.05207



● At. Alpha Band Taupe 25x70 M10 002.185.0285.05209



● At. Alpha Band Marengo 25x70 M10 002.185.0028.05209

El modelo At. Alpha Band no tiene continuidad gráfica.
The pattern in the At. Alpha Band model is not continuous.
Le modèle At. Alpha Band n'a pas de continuité graphique.



● Mold. Metal Bronce Brillo 2x70 P30 005.867.0804.02465



● Mold. Metal Plata Brillo 2x70 P26 005.867.0804.02466



● Mold. Metal Plata Mate 2x70 P26 005.867.0803.02466



Rvto. / Wall / Rvtm.: At. Alpha Blanco 25x70 - At. Alpha Marengo 25x70 - At. Alpha Cubic Marengo 25x70
Pvto. / Floor / Sol: At. Alpha Marengo 45x45

Pavimento Coordinado / Coordinated Flooring / Sol Coordinné:
At. Alpha 45x45 - Pavimento pasta roja / Red body floor tiles / Sol pâte rouge - Pág. / Page / Page 208

Empaquetado / Packaging / Emballage

Formato	pz/cj	m ² /cj	cj/pl	m ² /pl	kg/cj	kg/pl
25x70	9	1.58	64	101.12	24.64	1,596.96
2x70	28	-	-	-	6.90	-